



CITY OF STOCKTON

PUBLIC WORKS DEPARTMENT

22 East Weber Avenue, Room 301 • Stockton, CA 95202-2317 • 209 / 937-8411 • Fax 209 / 937-8277
www.stocktonca.gov

LETTER OF CLARIFICATION NO. 2

NEW CITY HALL RENOVATIONS & RELOCATION PROJECT PROJECT NO. E016015

TO ALL PROSPECTIVE BIDDERS

DATE: January 20, 2022

Letter of Clarification No. 2 for the above project consists of the following:

1. This acknowledgement form (see important notice at the end of this form).
2. Requests for clarification shall be submitted by 5:00 p.m. on Thursday, February 3, 2022. If a request warrants a letter of clarification and sufficient time exists to prepare one, such letter of clarification will be posted on Bid Flash at least two days prior to bid opening.

SPECIFICATIONS

1. Section 01 52 13 Field Offices and Sheds – **Remove** this section in its entirety and **Replace** with the attached section of the same name. Owner, Construction Manager, Architect Field Office requirements revised.
2. Section 03 92 50 Concrete Repair Mortars – **Remove** this section in its entirety and **Replace** with the attached section of the same name. Note the following changes:
 - A. Ardex “FDX” replaced with Ardex “FP”. FDX product is discontinued.
 - B. Removed Ardex “P71M” primer from Section 3.02D, paragraph 3. Product discontinued and primer not required.
3. Section 10 21 13.17 Phenolic Toilet Partitions – **Revise** part 2.02A, paragraph 1b: Floor Clearance from 4-5/16 inches to 9 inches.
4. Section 10 28 00 Toilet, Bath, and Laundry Accessories – **Revise** part 2.05A, paragraph 3: Cover from Plastic to Stainless Steel.

5. Section 27 41 16 Integrated Audio-Video Systems – **Remove** this section in its entirety and **Replace** with the attached section of the same name.
6. Section 27 53 19 Distributed Antenna System – **Revise** this section as follows:
 - A. Part 1.01 Description: **ADD** paragraph “G. DAS / ERRCS system to be non-proprietary.”
 - B. Part 2.01 Manufacturers: **ADD** to paragraph A “Or equal”.
7. Appendix H – AV BOM Schedule A: **Remove** this document in its entirety and **Replace** with the attached document of the same name. Note changes highlighted.

PLANS

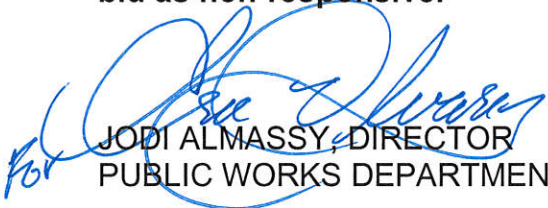
1. Sheets A-001 Schedules & Notes – **REVISE** model #, accessory mark T09 from 1082G.67P to 2082G.67P.
2. Sheets A1-402, A1-403 and A2-402 Enlarged Plans and Interior Elevations – **ADD** “TYP.” to accessory tag T09 on all interior elevations and enlarged plans. Toilet partitions in all remodeled restrooms, both buildings are new with tag T09.
3. Sheets A2-402 Enlarged Plans and Interior Elevations – **ADD** accessory tag T13 to accessible toilet stall at Women’s 2-406.
4. Sheet A-601 Door Schedule – Building 1 and Sheet A-602 Door Schedule – Building 2 – **REVISE** door thickness from 2” to 1 ¾”. Typical all doors.
5. Sheet FP1-101 Fire Protection First Floor Plan – Building 1 – Add bookmark to Plans Volume 2, page 922 to FP1-101 sheet. Clarification that sheet is in set, but bookmark currently goes to FP-101 Site Plan sheet.
6. Sheet E-001 Electrical Symbol List & Abbreviations - **Remove** this sheet in its entirety and **Replace** with the attached sheet of the same name. Changes are marked by cloud with delta 2. Ceiling monitor symbol added to symbol list.
7. Sheet EET-501 Riser Diagram-Data – **Remove** this sheet in its entirety and **Replace** with the attached sheet of the same name. Changes are marked by cloud with delta 2. Rack quantities revised to match plans.
8. Sheet T0-001 Security Electronics Legend and Notes Sheet, Device and Wiring Legend – **Revise** wiring for all camera’s from “1 – CAT6” to “1-CAT6A”.

9. Audio Visual drawing revisions & clarifications:

A. **Remove** the sheets listed below in their entirety and **Replace** each with the attached sheets of the same name:

- AV1-102 Audio Visual Second Floor Plan – Building 1
- AV1-104 Audio Visual Fourth Floor – Building 1
- AV2-101 Audio Visual First Floor Plan – Building 2
- AV2-103 Audio Visual Third Floor Plan – Building 2
- AV2-105 Audio Visual Fifth Floor Plan – Building 2
- AV-301 Audio Visual Single Lines
- AV-304 Audio Visual Single Lines
- AV-305 Audio Visual Single Lines
- AV-306 Audio Visual Single Lines

“Bids not presented on the revised bid forms shall be cause for considering the bid as non-responsive.”


JODI ALMASSY, DIRECTOR
PUBLIC WORKS DEPARTMENT

JA:EA:WJ:JC:JL:dc

NOTICE: THIS FORM MUST BE SIGNED AND RETURNED WITH YOUR BID. FAILURE TO SO INCLUDE OR ACKNOWLEDGE A CLARIFICATION MAY RESULT IN THE BID BEING REJECTED AS NOT RESPONSIVE.

CONTRACTOR: _____

BIDDER SIGNATURE: _____

DATE: _____

**SECTION 01 52 13
FIELD OFFICES AND SHEDS**

PART 1 GENERAL

1.01 SECTION INCLUDES

- A. Temporary field offices for use of Owner, **Construction Manager**, and Architect.
~~Temporary field offices for use of Construction Manager, Owner and Architect / Engineer.~~
- B. Temporary field offices for use of Contractor.
- C. Maintenance and removal.

1.02 RELATED REQUIREMENTS

- A. Standard Specifications and Section - 00 72 13 Special Provisions: Additional requirements related to temporary facilities, use of property.
- B. Section 01 10 00 - Summary: use of premises and responsibility for providing field offices.
- C. Section 01 50 00 - Temporary Facilities and Controls.

1.03 USE OF EXISTING FACILITIES

- A. Existing facilities shall not be used for field offices.

1.04 USE OF PERMANENT FACILITIES

- A. Permanent facilities shall not be used for field offices.

PART 2 PRODUCTS

2.01 CONSTRUCTION

- A. Portable or mobile buildings, or buildings constructed with floors raised above ground, securely fixed to foundations, with steps and landings at entrance doors.
- B. Locate offices a minimum distance of 30 feet from existing and new structures.
- C. Construction: Structurally sound, secure, weather tight enclosures for office. Maintain during progress of Work; remove when no longer needed.
- D. Temperature Transmission Resistance of Floors, Walls, and Ceilings: Compatible with occupancy requirements.
- E. Exterior Materials: Weather resistant, finished in one color.
- F. Interior Materials in Offices: Sheet type materials for walls and ceilings, prefinished or painted; resilient floors and bases.
- G. Lighting for Offices: 35 fc at desk top height, exterior lighting at entrance doors.
- H. Fire Extinguishers: Appropriate type fire extinguisher at each office.

2.02 ENVIRONMENTAL CONTROL

- A. Heating, Cooling, and Ventilating: Automatic equipment to maintain comfort conditions.

2.03 CONTRACTOR OFFICE AND FACILITIES

- A. Size: For Contractor's needs and to provide space for project meetings.
- B. Telephone: As specified in Section 01 50 00.
- C. Furnishings in Meeting Area: Conference table and chairs to seat at least eight persons; racks and files for Contract Documents, submittals, and project record documents.
- D. Other Furnishings: Contractor's option.
- E. Equipment: Ten adjustable band protective helmets for visitors, one 10 inch outdoor weather thermometer .

2.04 OWNER, CONSTRUCTION MANAGER, AND ARCHITECT FIELD OFFICE

- A. Separate space for sole use of Construction Manager, City and Architect, with separate entrance door with new lock and **three** keys.
~~Provide entrance door with new lock and two keys.~~
- B. **Field office will be used by Construction Manager, City of Stockton and Architect staff.**
- C. Area: At least 12' x 20' in size, **240** sf total.
- D. Windows: At least three, with minimum total area equivalent to 10 percent of floor area, with an operable sash and insect screen. Locate to provide views of construction area.
- E. Electrical Distribution Panel: Two circuits minimum, 110 volt, 60 hz service.
- F. Minimum four 110volt duplex convenience outlets, one on each wall.
- G. Telephone: As specified in Section 01 50 00.
- H. Sanitary Facilities: As specified in Section 01 50 00.
- I. Drinking Fountain: Convenient access by workers.
- J. Furnishings:
 - 1. **One desk** 54 by 30 inch, with three drawers.
 - 2. One meeting table to seat at least **six** persons.
~~One computer workstation with 24 by 48 inch work surface, CPU shelf, retractable keyboard tray, and space for computer monitor and 11 by 17 inch printer.~~
 - 3. Plan rack to hold working drawings, shop drawings, and record documents.
 - 4. **One** swivel arm chair.
 - 5. **Six** straight chairs.
 - 6. One waste basket per desk and table.

PART 3 EXECUTION

3.01 PREPARATION

- A. Fill and grade sites for temporary structures to provide drainage away from buildings.

3.02 INSTALLATION

- A. Install office spaces ready for occupancy 15 days after date fixed in Notice to Proceed.
- B. Parking: Two hard surfaced parking spaces for use by City and Architect, connected to office by hard surfaced walk.
- C. Employee Residential Occupancy: Not allowed on City's property.

3.03 MAINTENANCE AND CLEANING

- A. Weekly janitorial services for offices; periodic cleaning and maintenance for offices.
- B. Maintain approach walks free of mud and water.

3.04 REMOVAL

- A. At completion of Work remove buildings, foundations, utility services, and debris. Restore areas.

END OF SECTION 01 52 13

**SECTION 03 92 50
CONCRETE REPAIR MORTARS**

PART 1 - GENERAL

1.01 SUMMARY

- A. Portland cement-based structural repair mortar with integral corrosion inhibitor suitable for overlays and full depth repairs.
- B. Trowel-grade concrete repair mortar for 1/4" to 2" depth repairs.

1.02 RELATED REQUIREMENTS

- A. Drawings, general provisions of the Contract, and other related construction documents such as Division 01 specifications apply to this Section.
- B. Section 03 20 00 - Concrete Reinforcing.
- C. Section 03 30 00 - Cast-in-Place Concrete: Preparation of subgrade, granular fill, placement of concrete.
- D. Section 32 13 13 - Concrete Paving: Concrete site paving including concrete repair mortars and concrete dressings at exterior ramp repair.

1.03 REFERENCES

- A. ASTM C 39, Compressive Strength of Cylindrical Concrete Specimens
- B. ASTM C 293, Flexural Strength of Concrete
- C. ASTM C 469, Static Modulus of Elasticity and Poisson's Ratio of Concrete in Compression
- D. ASTM C 157, Length Change of Hardened Hydraulic-Cement Mortar and Concrete
- E. ASTM C 496, Splitting Tensile Strength of Cylindrical Concrete Specimens
- F. ASTM D 4541, Pull-Off Strength of Coatings Using Portable Adhesion Testers
- G. ASTM C 309, Standard Specification for Liquid Membrane-Forming Compounds for Curing Concrete
- H. ICRI Technical Guideline No. 03732 Specifying Concrete Surface Preparation for Sealers, Coatings, and Polymer Overlays
- I. ICRI Technical Guideline No. 03730 Guide for Surface Preparation for the Repair of Deteriorated Concrete Resulting from Reinforcing Steel Corrosion

1.04 SUBMITTALS

- A. Product Data: Submit manufacturer's product data and installation instructions for each material and product used. Include manufacturer's Material Safety Data Sheets.
- B. Qualification Data: For Installer.
- C. Shop Drawing of interior slab plan indicating slopes, elevation points, dimensions, construction joints, transition and edge details, transition between concrete repair mortar, existing slabs and new concrete slabs, reinforcement layout, location of items to be embedded, etc. Coordinate with work under spec section 03 92 50.

1.05 WARRANTY

- A. Manufacturer's Warranty; Submit, for Owners acceptance, manufacturer's EXTENDED warranty documents.

1.06 QUALITY ASSURANCE

- A. Manufacturer's Qualifications: The manufacturer shall be a company with at least five years experience and regularly engaged in the manufacture and marketing of products specified herein.

- B. Installation of the ARDEX product must be completed by an approved Ardex Level Master Elite installer qualified to provide extended warranties using mixing equipment and tools approved by the manufacturer. Please contact ARDEX Engineered Cements (724) 203-5000 for a list of recommended installers.

1.07 DELIVERY, STORAGE AND HANDLING

- A. Deliver products in original packaging, labeled with product identification, manufacturer, batch number and shelf life.
- B. Store products in a dry area with temperature maintained between 50° and 85° F (10° and 29° C) and Protect from direct sunlight.
- C. Handle products in accordance with manufacturer's printed recommendations.

1.08 PROJECT CONDITIONS

- A. Do not install material below 50° F (10° C) surface and air temperatures. These temperatures must also be maintained during and for 48 hours after the installation of products included in this section. Install quickly if substrate is warm and follow warm weather instructions available from the Ardex Technical Service Department.

PART 2 - PRODUCTS

2.01 REPAIR MORTAR

- A. Portland cement-based structural repair mortar with built in corrosion inhibitor for horizontal,
 - 1. vertical, and overhead applications for exterior and interior concrete above, on or below grade.
- B. Manufacturers:
 - 1. ARDEX Engineered Cements: www.ardexamericas.com/#sle.
 - 2. The QUIKRETE Companies: www.quikrete.com/#sle.
 - 3. W. R. Meadows, Inc: www.wrmeadows.com/#sle.
 - 4. Substitutions: See Section 01 60 00 - Product Requirements.
- C. Basis of Design:
 - 1. Full depth repairs: Ardex "FP"; Manufactured by Ardex Engineered Cements: 400 Ardex Park Drive, Aliquippa, Pa 15001 USA 724-203-5000.
 - a. Performance and Physical Properties: Meet or exceed the following values for material cured at 70° F (20° C) and 50% relative humidity:
 - 1) Application: Trowel.
 - (a) Working Time: 20 - 40 minutes.
 - (b) Compressive Strength: 4800 at 7 days, 6000 psi at 28 days, ASTM C39.
 - (c) Flexural Strength: 700 psi at 7 days, 750 psi at 28 days, ASTM C293.
 - (d) Modulus of Elasticity in Compression: 3.9 x 10⁶ psi at 28 days, ASTM C469, modified.
 - (e) Splitting Tensile Strength: 400 psi at 7 days, 600 psi at 28 days, ASTM C496.
 - (f) Direct Tensile Bond: 210 psi at 28 days, ASTM D 4541
 - (g) Color: Concrete gray.
 - (h) Combustibility: Non-combustible, both before and after use.
 - 2) At areas with exposed rebar sections, apply anti-corrosion inhibitor prior to installation of repair mortar.
 - 2. Trowel-grade horizontal concrete repair mortar: Ardex "ERM" Manufactured by ARDEX Engineered Cements: 400 Ardex Park Drive, Aliquippa, Pa 15001 USA 724-203-5000.
 - a. Performance and Physical Properties: Meet or exceed the following values for material cured at 73° F (23° C) and 50 percent relative humidity:
 - 1) Application: Trowel.
 - 2) Working Time: 25 - 45 minutes.

- 3) Compressive Strength: 7,000 psi (48.3MPa) at 7 days, 8200 psi (56.58 MPa) at 28 days, ASTM C109.
 - 4) Flexural Strength: 1,200 psi (8.3 MPa) at 7 days, 1,500 psi (10.3 MPa) at 28 days, ASTM C78.
 - 5) Modulus of Elasticity in Compression: 3.67×10^6 psi at 28 days, ASTM C469, modified.
 - 6) Shrinkage: less than 0.06% at 7 days, less than 0.08% at 28 days, ASTM C157, air cured.
 - 7) Rapid Chloride Permeability: 820 Coulombs, at 28 days, ASTM C1202.
 - 8) Low -slump, non-sagging.
 - 9) Color: Concrete gray.
 - 10) Combustibility: Non-combustible, both before and after use.
3. Bonding & Anti-Corrosion Agent: Ardex "Baca" or equal.
- a. Performance and Physical Properties:
 - 1) ASTM C882 Bond Strength:
 - (a) 1,800 at 2 hours (127 kg/cm²)
 - (b) 2,100 at 24 hours (148 kg/cm²)
 - 2) Two component, Portland cement/epoxy-based, brush or spray applied coating
 - b. Substrate Preparation:
 - 1) Prior to proceeding with any repair, please refer to the International Concrete Repair Institute's ICRI 03730 Guide for Surface Preparation for the Repair of Deteriorated Concrete Resulting from Reinforcing Steel Corrosion; ICRI 03732 Guideline for Selecting and Specifying Concrete Surface Preparation for Sealers, Coatings, and Polymer Overlays; and the American Concrete Institute's ACI 546R-04 Concrete Repair Guide for general guidelines for concrete repair. Please also refer to the mortar or repair manufacturer's specific recommendations for substrate preparation.
 - 2) All substrates must be solid, thoroughly clean and free of oil, wax, grease, asphalt, existing patching materials, curing and sealing compounds, and any contaminant that might act as a bond breaker. Over watered, frozen or otherwise weak concrete surfaces must also be cleaned down to sound, solid concrete by mechanical methods such as scarifying or similar in accordance with ICRI 03732 to create an exposed aggregate surface with a minimum surface profile of approximately 1/16" (1.6 mm). Acid etching, solvents, sweeping compounds and sanding are not acceptable means of preparing the substrate.
 - 3) When reinforcing steel is exposed for protection, prepare the concrete such that a minimum 3/4" (19 mm) clearance is achieved under the reinforcement to ensure sufficient placement of anti-corrosion agent when brushed under steel. Remove all rust or active corrosion agents using sandblasting or mechanical wire brushing to produce a white metal finish. Make sure surfaces are clean, dry and free of all contaminants. Apply immediately to clean metal to avoid new corrosion.

PART 3 - EXECUTION

3.01 PREPARATION

- A. General: Prepare substrate in accordance with manufacturer's instructions. Prior to proceeding with any repair, please refer to the International Concrete Repair Institute's ICRI 03730 Guide for Surface Preparation for the Repair of Deteriorated Concrete Resulting from Reinforcing Steel Corrosion; ICRI 03732 Guideline for Selecting and Specifying Concrete Surface Preparation for Sealers, Coatings, and Polymer Overlays; and the American Concrete Institute's ACI 546R-04 Concrete Repair Guide for general guidelines for concrete repair.
1. All concrete and masonry substrates must be sound, solid, dry, and completely free of all oil, grease, dirt, curing compounds and any substance that might act as a bond breaker.

Overwatered, frozen or otherwise weak concrete surfaces must also be cleaned down to sound, solid concrete by mechanical methods such as scarifying, scabbling or similar in accordance with ICRI 03732 before priming. Acid etching and the use of sweeping compounds and solvents are not acceptable.

2. At areas requiring more than 2" of concrete repair mortar, the repair area must be saw cut in a basic rectangular shape at least 1 1/2" in depth. The cuts should be made at 90° angle, and should be slightly keyed. Chip out the concrete inside the cuts to a minimum depth of 1 1/2" until the area is squared or box shape.
3. At areas requiring less than 2" of concrete repair mortar, the repair area must be saw cut in a basic rectangular shape at least 1/4" (6 mm) in depth. The cuts should be made at 90° angle, and should be slightly keyed. Chip out the concrete inside the cuts to a minimum depth of 1/4" (6 mm) until the area is squared or box shape.
4. Mechanically prepare surface to obtain an exposed aggregate surface with a minimum surface profile of approximately 1/16" (1.5 mm).
5. For cases with exposed reinforcing steel, mechanically clean the steel to remove all rust and any other contaminants in accordance with ICRI 03730. Prime the steel with "Ardex Bonding & Anti-Corrosion Agent" or equal prior to proceeding with repair. For further details, please refer to the Ardex Technical brochure.
 - a. Joint Preparation
 - 1) Moving Joints and Cracks - honor all expansion and isolation joints up through the concrete repair mortar. A flexible sealing compound suitable for the application may be installed. Ardex "Ardiseal Rapid Plus" or equal may be installed for interior applications only.
 - (a) Saw Cuts and Dormant Cracks - greater than 1/16" (1.6mm) should be filled with Ardex "Ardifix" or equal joint filler prior to installing Ardex "FP".

3.02 INSTALLATION OF REPAIR MORTARS:

- A. Examine substrates and conditions under which materials will be installed. Do not proceed with installation until unsatisfactory conditions are corrected.
- B. Coordinate installation with adjacent work to ensure proper sequence of construction. Protect adjacent areas from contact due to mixing and handling of materials.
- C. Mixing: Comply with manufacturer's printed instructions and the following.
 1. Precondition components to temperature of 70° plus or minus 5° F (21° plus or minus 2.5° C) prior to mixing.
 2. Pre-dampen the inside of a pail or inside of a clean mortar mixer, and remove any excess water.
 3. Add 6.5 pints (3.08 L) of clean potable water, and then add one-third of an 80-pound (36.4 kg) bag. Once this is blended in, add the next third and so on until all of the material is added.
 4. Mix using a 1/2" to 3/4" (12 to 19 mm) low speed heavy-duty mixing drill with a heavy gauge square box (butterfly) mixing paddle. Forced action mortar mixers are also suitable. Mix to a uniform, lump-free consistency. For both mixing methods, avoid over mixing, which may entrap air. If additional water is required, you may add up to 8 oz. (0.24L) of additional mix water per bag. Do not overwater.
- D. Application: Comply with manufacturer's printed instructions and the following.
 1. Do not apply in freezing conditions or during precipitation.
 2. Comply with manufacturer's guides for hot and cold weather application.
 3. Dampen substrate to fill concrete pores with water. Remove ponding, glistening, or surface water (saturated surface dry). ~~Alternatively, Ardex "P71M" Primer or equal can be used in accordance with the ARDEX Technical brochure. Do not allow the concrete or Ardex "P71M" to dry before installing Ardex "FDX".~~ If Ardex Bonding & Anti-Corrosion Agent is specified as a primer, follow the application instructions in the ARDEX Technical Brochure.

New City Hall Renovations & Relocation Project

4. When overlaying, apply scrub coat of repair mortar into substrate to ensure intimate contact and establish bond. Apply Ardex "FP" while scrub coat is wet. Consolidate and trowel to the desired finish.
 5. When pouring into closed forms, the repairs can be vibrated to ensure full contact and to establish bond with the substrate, as well as ensure proper consolidation. Avoid over-vibration.
 6. Steel trowel the mortar to the desired finish once it takes its initial set.
 7. Ardex "FP" can be installed from a minimum of 1 1/2" up to 8" neat (38mm to 20.3 cm).
- E. See Slab Plan Sheet A-102 for transition between trowel grade and full depth repair mortar. Blend mortar per manufacturers instructions. Also see Structural Foundation Plan for area to receive rebar.
- F. Any exposed rebar to receive anti-corrosion agent.
- G. Curing:
1. Keep surface damp for 48 hours with continuous light water-fogging or curing blanket.
 2. If no coating or sealer is to be applied, a water-based curing compound meeting ASTM C309 may be used. Do not use solvent-based curing compounds.
 3. Allow to cure a minimum 72 hours before applying any final coatings or sealers.
- H. Cleaning: Remove excess material before material cures. If material has cured, remove using mechanical methods that will not damage substrate.

END OF SECTION 03 92 50

SECTION 27 41 16
INTEGRATED AUDIO-VIDEO SYSTEMS

PART 1 GENERAL

1.01 SECTION INCLUDES

- A. Installation of integrated audio-video systems.

1.02 RELATED REQUIREMENTS

- A. Division 01: General Requirements
- B. Division 06: Finish Carpentry
- C. Division 26: Electrical Systems
- D. Division 27: Communications Systems

1.03 DEFINITIONS

- A. "City": The owner of the facility.
- B. "A/R" (As Required): The quantities on most items are not specified in this specification, so the bidding contractor must refer to the drawings to determine how many items to supply.
- C. Scope of Work: This specification section defines certain audio, video, and control systems to be installed the contractor. Please see the "SYSTEM DESCRIPTION" section for specifics.
- D. Definition of Terms:
 - 1. The term "shall" is mandatory; the term "will" is informative; the term "should" is advisory; and the term "provide" means furnish and install.
 - 2. The term "custom" indicates systems or components that shall be fabricated by the Contractor based on these specifications and drawings.
 - 3. The term "OFE" refers to Owner-Furnished Equipment, which are specified in other sections, or by some other means or procurement source.
 - 4. The term "OFCl" refers to Owner-Furnished, Contractor-Installed equipment. Coordinate the integration of new components provided by the Owner. Provide required additional mounting hardware, etc. to ensure proper operation of the systems as specified.
 - 5. The term "NIC" refers to work or equipment that is not in contract covered in this section.
 - 6. The term "future" indicates equipment that shall be added to the systems by the Owner or Owner representative at a later date. Provisions shall be made for this equipment.
 - 7. The term "or equal" indicates equal in materials, size, color, design, function, efficiency of specified, and conforming with base bid manufacturer/model.
 - 8. The term "future" indicates equipment that shall be added to the systems by the Owner or Owner representative at a later date. Provisions shall be made for this equipment.
 - 9. The term "or equal" indicates equal in materials, size, color, design, function, efficiency of specified, and conforming with base bid manufacturer/model.
 - 10. Where definitions provided herein differ from those in other Sections, definitions in this Section will take precedence for work in this Section.
 - 11. HDTV: High Definition Television
 - 12. Cabling System: All required equipment and cabling including hardware, cable support, conduit, back boxes, labeling, connectors, splitters, patch cords, modular AV connector

plates, horizontal cabling installed and configured to provide connectivity between equipment locations.

13. Horizontal cabling: All cabling, termination hardware, cable support systems and cable management required to properly place cabling between two points.
14. Channel: Components to include the cable, termination hardware, and patch cables.
15. Provide: To supply all necessary labor and material, including miscellaneous material, accessories and appurtenances required to install, test, and make fully functional and ready for intended use.
16. Install: Same as Provide.
17. Furnish: To supply material only; no installation is required.

E. Section Includes:

1. Supply and install components for audiovisual systems

1.04 INCORPORATED DOCUMENTS

- A. Published specifications, standards, tests or recommended methods of trade, industry, or governmental organizations apply to work of this Section where cited by abbreviations noted below.
- B. ANSI/TIA/EIA-568-B.1 – Commercial Building Telecommunications Cabling Standards
- C. EIA/TIA-569-A – Commercial Building Standard for Telecommunications Pathways and Spaces
- D. ANSI/TIA/EIA-607 – Commercial Building Grounding and Bonding for Telecommunications
- E. National Electrical Code (NEC)
- F. California Electrical Code Amendments (CEC)
- G. Underwriters Laboratories (UL)
- H. BICSI – Building Industry Consulting Services Intl., Tampa, FL
- I. SMPTE – Society of Motion Picture and Television Engineers
- J. ISO – International Standards Organization
- K. NEMA – The Association of Electrical and Medical Imaging Equipment Manufacturers

1.05 SUBMITTALS

- A. Product Data Submittal
 1. Submit product information for components specified herein prior to the purchase and installation of equipment. If any equipment or systems are purchased prior to receiving an approved submittal, the contractor incurs the risk if the purchased equipment is not subsequently approved.
 2. Submit only one copy of each data sheet to be included, even if the device or system is used in more than one space. At the beginning of the submittal, for each space within the facility, provide an equipment list with the descriptions, manufacturers, part numbers, quantities and page reference for the data sheet of all required.
 3. Sequentially mark the page numbers on the data sheets. Arrange the sheets alphabetically by manufacturer. To minimize the size of the submittal, please limit the size of each data sheet to two or three pages.
 4. If the data sheet includes more than one part, indicate the manufacturer, model/part number, accessories and options selected, color (if applicable), and a brief product description.

B. Shop Drawing Submittal

When drawings are revised due to authorized changes via RFIs or Change Orders, re-submit these revised drawings.

1. The shop drawing submittal should include a complete package of information required to build the system. If there are questions as to color, accessories to be provided, or coordination issues, these questions should have been asked and answered before the submittal is issued.
2. Provide enlarged AV floor plans and reflected ceiling plans indicating device locations with device legends indicating manufacturer and model number of each device.
3. Provide enlarged AV plans and reflected ceiling plans showing infrastructure requirements in support of the AV system.
4. Provide mounting details for all AV equipment and hardware.
5. Provide functional single-line drawings. Include equipment names and model numbers. Clearly label each item of equipment shown on the drawing with the manufacturer's terminal number or input/output designation (e.g., "Mic 1-In", or "Record Out-Left"). Label the room number of the equipment room on the drawing. Show the entire wire run from source, through the equipment room to the destination, on the same drawing to make it easier to follow signal flow.
6. Provide full-scale drawings of custom wall plates, rack panels and button panels indicating exact lettering, critical dimensions, and finishes. Indicate location and quantity for each plate and panel. Engraving of each plate shall be unique in each space, (i.e. only one M1 in each space).

1.06 DELIVERY, STORAGE AND HANDLING

- A. Deliver products in factory containers. Store in clean, dry space in original containers.

1.07 RECORD DRAWINGS

- A. Provide Record Drawings in accordance with Division 1 requirements. Separately, provide Record Drawings in accordance with this Section, Paragraph 3.07B.

1.08 SYSTEM DESCRIPTION:

This is a WIP description subject to revision.

- A. Council Chambers (1-123) and Channel 97 (Equipment) Room (1-128)
1. Provide and install (2) 98" commercial displays on wall tilt mounts
 2. Provide and install (2) 65" commercial display on wall tilt mounts
 3. Provide and install (12) 8" flush mount 70v ceiling speakers
 4. Provide and install ALS IR emitter system for ADA and CBC requirements
 5. Provide and install (14) 18" super-cardioid gooseneck mics on dais
 6. Provide and install (1) 18" cardioid gooseneck mics at lectern
 7. Provide and install (10) dais mounted touch screens with swivel mount to be integrated with OFE voting system (app TBD)
 8. Provide and install a multiformat HD-BaseT switcher in the [equipment wall cabinet](#) in Channel 97 TV room (1-128)
 9. Provide and install a 2 channel 70V amplifier switcher Channel 97 room (1-128)
 10. Provide and install a control system processor in the [equipment wall cabinet](#) in Channel 97 room (1-128)
 11. Provide and install a Digital Signal Processor in the equipment [cabinet/rack](#) in 1-128
 12. Provide and install a multiformat HD-BaseT Switcher in the [wall cabinet](#) in Channel 97 TV room (1-128)

11. Provide and install a 2 channel Provide and install a 2 channel 70V amplifier switcher in wall equipment cabinet in Channel 97 TV room (1-128)

12. Provide and install a 24 port managed PoE+ gigabit switch in the AV rack in Channel 97 TV room for all AV control traffic.

~~13.~~

- B. Channel 97 Room (1-128)
 - 1. Provide and install a 4 post, 37 RU equipment cabinet with sides, top and necessary mounting screws and hardware.
 - 2. Provide and install a Hoffman AN12N12 wall box. All Channel 97 equipment is OFOI.
- C. Public Lobby (1-102)
 - 1. Provide and install wall-mounted (1) commercial grade 65" LCD displays with signage player. Provide and install a stand-alone HDBaseT transmitter at the Owner's queuing system workstation. Configure the displays for both video and audio.
- D. Offices (multiple)
 - 1. Provide and install (1) commercial-consumer grade LCD display with integrated tuner, backbox and wall mounting bracket, and (1) LAN connection. See floor plans for display size.
- E. Conference Rooms (multiple)
 - 1. Provide and install (1) commercial LCD display with wall mounts, backbox, and 4K HDBaseT receiver, see floor plans for display size.
 - 2. Provide and install (1) 4K HDBaseT transmitter with HDMI in rooms with floor boxes
 - 3. Provide and install cable surface cable passage system from table to display
- F. Small Conference Rooms (multiple)
 - 1. Provide and install (1) commercial LCD display with wall mounts, backbox, and 4K HDBaseT receiver, see floor plans for display size.
 - 2. Provide and install (1) 4K HDBaseT transmitter with HDMI on wall plate.
- G. Conference Rooms – Large (multiple)
 - 1. Provide and install large commercial LCD displays with wall mounts, backboxes, and 4K HDBaseT receivers, see floor plans for size and quantity.
 - 2. Provide and install (4) 8" 70v flush mount ceiling speakers
 - 3. Provide and install in-room AV cabinet with source equipment (TBD), audio amplifier, source switching, and system control
 - 4. Provide and install cable surface cable passage system from table to display
- H. Training Room (1-308)
 - 1. Provide and install (1) 85" commercial grade LCD display with wall mounting bracket, backbox, and 4K HDBaseT receiver.
 - 2. Provide and install 4" 70v flush mount ceiling speakers as shown on ceiling plan
 - 3. Provide and install in-room AV cabinet (under table) with source equipment (TBD), audio amplifier, source switching, and system control
 - 4. Provide wireless lavalier mic system
- I. Conference Room – Extra Large (1-422)
 - 1. Provide and install (2) 75" commercial grade LCD displays with wall mounting brackets
 - 2. Provide 2:1 automatic HDMI switcher
 - 3. Provide and install 8" 70v flush mount ceiling speakers as shown on ceiling plan
 - 4. Provide and install 2 channel 70v amplifier
 - 5. Provide and install in room AV cabinet
 - 6. Provide wireless lavalier mic system
 - 7. Provide and install wall control panel
- J. Innovation Lab (1-536)
 - 1. Provide and install (1) 85" commercial grade LCD displays with wall mounting brackets, backboxes, and 4K HDBaseT receiver.
 - 2. Provide and install (1) 4K HDBaseT transmitter with HDMI on wall plate.

Stockton City Hall Relocation – Waterfront Towers

- K. Stockton Stat Room (1-535)
1. Provide and install (1) 86" commercial grade LCD televisions with wall mounting brackets, backboxes, 4K HDBaseT receiver and (1) LAN connection.
 2. Provide and install (2) 85" commercial grade LCD television on ceiling deck mounts with 4K HDBaseT receivers and (1) LAN connection.
 3. Provide and install (2) HDBaseT transmitters under the table with 8' HDMI patch cables to the table surface
 4. Provide and install (14) 12" super-cardioid gooseneck mics on table
 5. Provide and install (1) 18" super-cardioid gooseneck mics on lectern
 6. Provide and install a multiformat HD-BaseT switcher in the casework cabinet
 7. Provide and install a 2 channel 70V amplifier switcher in the casework cabinet
 8. Provide and install a control system processor in the casework cabinet
 9. Provide and install a wall-mounted 10" touch panel
 10. Provide and install a wall mounted ALS emitter
 11. Provide and install 8" 70v flush mount ceiling speakers as shown on ceiling plan
 12. Provide and install a 24 port managed PoE+ gigabit switch in the AV rack for all AV control traffic.
- L. Public Lobby (2-101)
1. Provide and install ceiling-mounted (2) commercial grade 40" LCD displays with HDBaseT receivers. Provide and install a stand-alone 1:2 HDBaseT transmitter at the Owner's queuing system workstation. Configure the displays for both video and audio.
- M. Large Conference (2-427)
1. Provide and install (1) 86" commercial grade LCD televisions with wall mounting brackets, backboxes, 4K HDBaseT receiver and (1) and LAN connection.
 2. Provide and install (4) HDBaseT transmitters under the table with 8' HDMI patch cables to the table surface
 3. Provide and install (3) ceiling microphones
 4. Provide and install a 4:1 HD-BaseT auto-switcher in the undertable equipment cabinet
 5. Provide and install a 2 channel 70V amplifier switcher in the undertable equipment cabinet
 6. Provide and install a wall-mounted controlpanel
 7. Provide and install a digital signal processor in the undertable equipment cabinet
 8. Provide and install 4" 70v flush mount ceiling speakers as shown on ceiling plan
- N. Traffic Control (2-346)
1. Provide and install a NVX encoder connected to OFE computer
 2. Provide and install an 8 port gigabit LAN PoE+ switch
- O. Offices 2-320, 322, 340, 341 and 342
1. Provide and install (1) commercial LCD display on wall mount
 2. Provide and install (1) NVX decoder at display
- 8-3. Provide and pull CAT6 cabling from decoder to LAN switch provided in 2-346
- N.P. CATV Distribution
1. Provide and install a RF over CAT 6 cable distribution with the following:
 - a. (1) 8 or 16 port distribution hub in an equipment rack in the IDF on each level with CATV locations (see drop number on FP for appropriate port number).
 - b. (1) balun at each display location (see drawings for quantity).Run homerun CAT6 cable from each balun back to the IDF with the hub per system drawings.
 - c. Pull and connect (1) RG6 riser coax or singlemode fiber between the IDFs with CATV hubs.
- O-Q. ADA – Building
1. Provide (only) two portable assistive listening systems for each building meeting ADA and California Building Code (CBC) requirements for accessibility:

PART 2 PRODUCTS

Project #: E016015

27 41 16 - 5

INTEGRATED AV SYSTEMS

Rev. 0140/1829/22 – LOC No. 24

2.01 SEE SCHEDULE A FOR ALL AV EQUIPMENT

2.02 GENERAL

- A. All materials shall be new, installed and turned over free of rust, corrosion or defects. For uniformity, only one manufacturer will be accepted for each type of product.

2.03 WIRING AND CABLE

- A. All wiring shall conform to NEC Article 760 and to the manufacturer's wiring specifications.
- B. Contractor shall be allowed to use existing conduit pathways.
- C. Cables running in plenum air spaces without conduit shall be plenum rated cable. Cables running in areas exposed to environmental factors such as, but not limited to, UV, chemicals, direct burial, etc. shall be rated for such exposure.
- D. All cables (except video and sync cables which must be cut to an electrical length) shall be cut to the length dictated by the run. No splices shall be permitted without prior permission of the Consultant. For equipment mounted in drawers or on slides, the interconnecting cables shall be provided with a service loop of appropriate length.
- E. No cable shall be installed with a bend radius less than that recommended by the manufacturer.
- F. All wiring shall be UL Listed for the intended application.

2.04 CABLING

- A. All Cabling shall conform to following codes and standards:
 1. ANSI - TIA/EIA 568B, Commercial Building Telecommunications Cabling Standard
 2. ANSI- TIA/EIA 569A, Commercial Building Standard for Telecommunications Pathways and Spaces
 3. ANSI - TIA/EIA 607, Commercial Building Grounding and Bonding Requirements for Telecommunications
 4. NFPA 70, 2008 Edition - Article 645, National Electrical Code, Information Technology Equipment
 5. NFPA 70, 2008 Edition - Article 800, National Electrical Code, Communications Circuits.
 6. NECA/BICSI 568-2001, Installing Commercial Building Telecommunications Cabling
 7. TDMM- BICSI, Telecommunications Distribution Methods Manual

CABLE TYPES AND ACCEPTED MANUFACTURERS				
TYPE DESCRIPTION	SIZE	PLENUM	MANUFACTURER	PART #
CATV RF CMP	RG6	Y	BELDEN	1152A
CATV RF CMR	RG11	N	BELDEN	1523R
CATV RF CMP	RG11	Y	BELDEN	1153A
Antenna Coax 50 Ohm	RG58	Y	BELDEN	88240
SDI 3G (Rack)	Mini59	N	BELDEN	1855A
SDI 3G	RG59	Y	BELDEN	1506A
SDI 3G	RG6	Y	BELDEN	1695A
SDI 12G	RG7	Y	BELDEN	4794R
CAT5E UTP (Rack)	24GA	N	BELDEN	1583A

Stockton City Hall Relocation – Waterfront Towers

CAT5E UTP (Riser)	24GA	Y	BELDEN	1585A
CAT6+ UTP (Rack)	23GA	N	BELDEN	2412
CAT6+ UTP (Riser)	23GA	Y	BELDEN	2413
CAT6+ STP (Media)	23GA	Y	BELDEN	2413F
CAT6A ENHANCED (USB3.0)	23GA	N	BELDEN	10GXS12
CAT6A ENHANCED (USB3.0)	23GA	Y	BELDEN	10GXS13
AUDIO (1-PR SHLD)	22GA	Y	BELDEN	9451P
AUDIO (1-PR SHLD)	22GA	Y	WEST PENN	25291
AUDIO (1-PR SHLD)	20GA	Y	WEST PENN	25292
SPEAKER (1-PR)	12GA	Y	BELDEN	6000UE
SPEAKER (1-PR)	14GA	Y	BELDEN	6100UE
SPEAKER (1-PR)	16GA	Y	BELDEN	6200UE
SPEAKER (1-PR)	16GA	Y	WEST PENN	25225
CONTROL 2-PR (4 COND)	18GA	Y	BELDEN	8875MN
CONTROL 2-PR (4 COND)	22GA	Y	WEST PENN	25510
CONTROL 2-PR (4 COND)	22GA	Y	BELDEN	88723
USBC TO HDMI 4K/60 6'		PATCH	C2G	26889
USBC TO HDMI 4K/60 15'		PATCH	C2G	26890
USB2.0 USBC TO USBA 6'		PATCH	C2G	28871
USB3.0 USBC TO USBA 6'		PATCH	C2G	28832
USB3.0 USBC TO USBB 6'		PATCH	C2G	28866
USB3.0 USBC TO USBA ADP		PATCH	C2G	28868

2.05 LABELS

- A. Cable labels: LaserJet or InkJet self-laminating label with white print-on area. Panduit JSL5-V3-1, Brady or equal. No handwritten labels shall be accepted.

2.06 MISCELLANEOUS

- A. Insulating bushings. For use with EMT or rigid conduit and designed to protect cable from sharp edges. Arlington Industries or equal.

PART 3 EXECUTION

3.01 GENERAL

- A. Work shall be installed in neat, workmanlike manner only by competent and experienced workers. All equipment shall be installed to comply with manufacturer's written instruction.
- B. Refer to Drawings for additional installation requirements.

3.02 SCOPE

3.03 WIRING METHOD

- A. Install cabling through conduits or sleeves. Use existing conduit paths where available. Provide pull string for future cable installation in any communications conduit 2" I.D. or larger during cable installation.
- B. Provide grommets through knockouts prior to placing cable. Provide insulation bushings on conduits and sleeves prior to placement of cable.
- C. Penetrations: Seal all rated partition penetrations with a fire stop system acceptable to the Authority Having Jurisdiction. Use specified fire rated wiring device or seal conduits with removable sealant.
- D. Provide modular connectors and specified faceplate type at wall locations.
- E. Provide 1/4" scale shop drawings of any atypical installation prior to installation.
- F. Service cable shall be of sufficient length that all rack mounted equipment should be able to be removed from the front of the rack halfway without disconnecting any cables. On floor and wall boxes, plates should be able to be pulled entirely out of the box and laid on a surface for access to the rear connectors without disconnecting any cables.

3.04 CABLING

- A. Provide specified termination hardware and faceplates in accordance with these Specifications and EAV-series Drawings.
- B. Provide modular connectors, fittings, and adapters as required to make a fully functional system.
- C. Replace any cabling installed under this work that is kinked or chaffed to the point of exposing conductor.

3.05 LABELING

- A. Label cables installed as part of this work using the specified labels. Affix labels at each end of cable. Additionally, affix labels to inter-building cables as they pass through pull boxes and underground vaults
- B. Provide white labels with black lettering when labeling faceplates and termination hardware.
- C. All labeling to be machine generated (Brother P-Touch, Panduit, Brady, ink-jet or laser printer).
- D. Add labels to the equipment racks bearing serial numbers of that equipment for which the serial numbers are not readily viewable when mounted.

3.06 TESTING

- A. Test equipment: Use testing equipment and methods acceptable to the manufacturer of the connectivity hardware. Include the following procedures.
 - 1. Test all audio, video, RF, wireless and remote-control systems for compliance with the functional requirements and Performance Standards.
 - 2. Configure, provision and align equipment for optimum performance and to meet the manufacturer's published specifications.
 - 3. Prepare and maintain documentation of performance tests, including dates performed, numerical values of established equipment settings, for reference during the System Acceptance Tests. Submit final results prior to scheduling Final Acceptance Tests Manual.
 - 4. Follow Electronic Industries Association Standards RS 219 and RS 160 in performing these tests.
- B. Audio Systems
 - 1. Audio Test Signal Paths: Verify signal flow and performance from source inputs (for microphones, recorders, DVD and CD units, etc.) through distribution amps, signal processors, mixers, switchers, etc., to signal destinations.
 - 2. Hum and Noise Level:
 - a. Measure the hum and noise levels of the overall system for each microphone input channel and line-level input channel.
 - b. Adjust gain controls for optimum signal-to-noise ratio so that full amplifier output will be achieved with 0 dBm at a line-level input.
 - c. Terminate line-level inputs with shielded resistors of 150 and 600 ohms, respectively, for these measurements.
 - d. Disconnect the loudspeaker lines and terminate the power-amplifier outputs with power resistors for these measurements. The value of the load resistor shall be within 5% of the nominal load impedance of the amplifier under test. The power rating of the resistor shall equal the power rating of the amplifier.
 - e. Using the oscilloscope on the output of each audio amplifier with the loudspeakers connected, check to ensure that output is free from spurious oscillation and radio-frequency pickup, in the absence of audio input signal and when the system is driven to full output at 100 Hz. Apply slow sine-wave sweep from 50 Hz to 5 kHz at a level of 6 dB below rated power-amplifier output voltage. Listen carefully for buzzes, rattles and objectionable distortion.
- C. Video Systems
 - 1. Video Test Signal Paths: Verify signal flow and performance from source inputs (for cameras, recorders, DVDs, CATV receivers, input plates etc.) through distribution amps, signal processors, switchers, etc., to signal destinations.
 - 2. Signal-to-Noise: Operate system at standard input and output levels. Terminate with standard load impedance. Measure noise level using oscilloscope for signals from 10 kHz to 4.2 MHz and an RMS volt-meter for signals from 0 to 10 kHz, and calculate signal-to-noise ratio.
 - 3. Test all progressive scan inputs at a variety of common resolutions, up to the native resolution of the display device.
- D. Provide one printed copy of test results bound in a 3-ring binder. Organize in ascending outlet ID order. Provide electronic copy of test results for review and approval. Provide software (if other than MS Office) required to properly view and print the test results. If proprietary software is required, provide one copy of user license with the test results.

3.07 DOCUMENTATION

- A. Provide all test results on the cabling as specified in Paragraph 3.06.
- B. Provide Record Drawings showing device outlet number (label ID). Architect will provide AutoCAD backgrounds for Contractor's use in developing Record Drawings. Provide electronic copies on CD and two bond copies (1/8" scale). The device outlet number Record Drawings

specified in this paragraph are in addition to Record Drawings, shop drawings, or any other Drawings required by Division 0 and Division 1.

3.08 CLEANUP AND REPAIR

- A. Upon completion of the work, remove refuse and rubbish from and about the premises, and shall leave the relevant areas and equipment clean and in an operational state. Repair damage caused to the premises by the installation activities, at no cost to the Owner

3.09 PROTECTION OF WORK

- A. During the installation, and up to the date of final acceptance, protect finished and unfinished work against damage and loss. In the event of such damage or loss, replace or repair such work at no cost to the Owner.

END OF SECTION

SCHEDULE A

STOCKTON CITY HALL BLDG 1 FL 1

LOCATION	QTY	MANUFACTURER	MODEL #	ITEM DESCRIPTION	COST	EXT. COST	
1- 123 COUNCIL CHAMBERS	2	NEC	C981Q	98" UHD Commerical display		0.00	
	2	Chief	PNRIWUB	LG Dual Swing Arm 25" extension		0.00	
	2	Chief	PACS01	In-Wall recessed box		0.00	
	2	NEC	ME651	65" Commercial LCD display council walls		0.00	
	2	Chief	PNRIWUB	In-Wall Swing arm mount		0.00	
	2	Chief	PACS01	In-Wall Box for PNRIWUB		0.00	
	4	Crestron	DM-RMC-4KZ-SCALER-C	DM 4K scaling receivers		0.00	
	1	Crestron	DM-TX-4KZ-100-C-1G-B-T	DM 4K 1-gang transmitter: 1 dais		0.00	
	1	AJA	Hi5-Plus	3G SDI to HDMI converter for DAIS		0.00	
	12	QSC	AC-D8T-BH	Commercial 8" flush mount ceiling speaker, black		0.00	
	2	JBL	CBT 50LR-1	Full range column line array 8 drivers		0.00	
	1	Williams AV	WIR TX90DC-B	Large Area IR Transmitter (BLK) with wall bracket, cable and DC PSU		0.00	
	4	Williams AV	WIR-RX22-4N NLK	4CH IR RX with Neck Loop		0.00	
	4	Williams AV	HED-021	Folding Headphones		0.00	
	2	Williams AV	BAT-KT6	2-Bay Charger		0.00	
	10	Shure	MX412S/S	12" supercardioid gooseneck with mute sw, preamp, shockmount, for dais		0.00	
	2	ART	S8	8-channel mic splitter		0.00	
	1	Crestron	TSW-1070-B-5	10.1" Touch Screen, Black smooth for dais		0.00	
	1	Crestron	TSW-1070-SMK	Swivel mount kit for TTK for permanent mounting		0.00	
	10	Crestron	TSW-770-B-5	7" Touch Screen, Black smooth for dais		0.00	
	10	Crestron	TSW-770-SMK	Swivel mount kit for TTK for permanent mounting		0.00	
	1	Kramer	VM-10H2	HDMI 10-output distribution amplifier		0.00	
	10	Beetronics	9HD7M	9" Desktop HDMI LCD monitor		0.00	
	4	Shure	MX412S/C	12" cardioid gooseneck with mute sw, preamp, shockmount, for staff desk		0.00	
	1	Shure	MX-418/C	18" cardioid gooseneck with preamp, shockmount, for lectern		0.00	
	2	Extron	60-1927-02	Cable Cubby 202-US, incl 1 AC outlet for lectern		0.00	
	1-102 LOBBY	1	NEC	ME651	65" 4K UHD Display Overflow monitor [LCD4-]		0.00
		1	Chief	RXF2	Fixed Wall Bracket		0.00
		1	Chief	PACS25F	Flush mount backbox for AV and power		0.00
		1	Crestron	DM-RMC-4KZ-SCALER-C	DM 4K scaling receiver		0.00
	1-128 CHANNEL 97 TV ROOM	1	Crestron	CP4N	main controller		0.00
		1	Crestron	DM-MD16x16-CPU3-RPS	Digital Media 16x16 with redundant power supply		0.00
		1	Crestron	DMC-4KZ-C-DSP	DM8G+ 4K60 input card with DSP audio for DM switchers		0.00
7		Crestron	DMC-4KZ-HD	HD 4K60 input card for DM switchers		0.00	
1		Crestron	DMC-SDI	3G-SDI input card for DM switchers		0.00	
3		Crestron	DMC-4KZ-CO-HD	2-channel DM8G+ 4K60 output card for DM switchers		0.00	
1		Crestron	DMC-4KZ-HDO	2-channel HD 4K60 output card for DM switchers		0.00	
2		QSC	I/O-8 Flex	QSYS audio expander		0.00	
1		QSC	Core 110f	Unified DSP core processor		0.00	
1		QSC	CX-204V	4-channel 250W/CH 70V amplifier		0.00	
1		QSC	CX-302	2-Ch Audio amplifier 300W		0.00	
6		SCT	RC5-UNI-KS	RCS camera extender kit (Tx and Rx) with rack shelf		0.00	
1		Contemporary Research	232-ATSC 4K HDTV	CATV ATSC Tuner		0.00	
1		Contemporary Research	RK2EZ	Dual rack kit		0.00	
1		AJA	ROI-HDMI	Region-of-interest HDMI to 3G-SDI converter		0.00	
1		AJA	3GDA	3G SDI 1x6 distribution amplifier		0.00	
1		GEARMO	GM-ASD-102	USB over IP Device Server		0.00	
1		APC	SRT3000RMLA-NC	Rack UPS		0.00	
1		APC	8932	Rack PDU		0.00	
1		Netgear	GSM4328PA	M300-28G-POE+ media switch		0.00	
2		Middle Atlantic	WRK-37-27	WRK series 24-1/4" wide rack, 27" D, with rear door.		0.00	
2		Middle Atlantic	WRK-24	Seismic rack brackets, set of four		0.00	
2		Middle Atlantic	SPN-37-267	37RU rack side panels, 1 set.		0.00	
1	Z-Band	ZBT0010085	Impedance matching balun for Receiver endpoints		0.00		
1-113-14 OFFICES	2	NEC	M431	43" Thin Depth Commerical Display		0.00	
	2	Sanus	VMPL50A-B1	Low profile Tilt wall mount		0.00	
	2	Z-Band	ZBT0010085	Impedance matching balun for Receiver endpoints		0.00	
1-116 STAGING RM	1	NEC	C551	55" Thin Depth Commerical Display		0.00	
	1	Chief	RXF2	Fixed Wall Bracket		0.00	
	1	Chief	PACS25	Flush mount backbox for AV and power		0.00	
	1	Crestron	MP-BP152	HDMI Passive 1G wall plate		0.00	
	1	Z-Band	ZBT0010085	Impedance matching balun for Receiver endpoints		0.00	
1-117 CONFERENCE ROOM	1	NEC	M551	55" Thin Depth Commerical Display		0.00	
	1	Chief	RXF2	Fixed Wall Bracket		0.00	
	1	Chief	PACS25	Flush mount backbox for AV and power		0.00	
	1	Crestron	MP-BP152	HDMI Passive 1G wall plate		0.00	
	1	Z-Band	ZBT0010085	Impedance matching balun for Receiver endpoints		0.00	
1-136 PUBLIC WORK	1	NEC	ME651	65" 4K UHD Display		0.00	
	1	Chief	RXF2	Fixed Wall Bracket		0.00	
	1	Chief	PACS25	Flush mount backbox for AV and power		0.00	
	1	Crestron	HD-TX-301-C-E	DM Lite - 2 HDMI 1 VGA 3x1 auto switcher transmitter under table		0.00	
	1	Crestron	HD-RX-101-C-E	DM Lite 2x1 Scaling receiver mounted behind display		0.00	
	2	Extron	60-1927-02	Cable Cubby 202-US, incl 1 AC outlet		0.00	
	2	Extron	70-1043-02	Cable Cubby 202 Retractor bracket		0.00	
	2	Extron	70-1065-03	Retractor Series Network CAT6, 3 feet		0.00	
	2	Extron	70-1065-04	Retractor Series XL HDMI, 3 feet		0.00	
1-137 MAP ROOM	1	Samsung	50TU8000	50" Crystal UHD Smart TV		0.00	
	1	Sanus	VMPL50A-B1	Low profile Tilt wall mount		0.00	
	1	Z-Band	ZBT0010085	Impedance matching balun for Receiver endpoints		0.00	

1-139 CONF	1	NEC	ME651	65" 4K UHD Display	0.00
	1	Chief	RXF2	Fixed Wall Bracket	0.00
	1	Chief	PAC525	Flush mount backbox for AV and power	0.00
	1	Crestron	HD-TX-301-C-E	DM Lite - 2 HDMI 1 VGA 3x1 auto switcher transmitter under table	0.00
	1	Crestron	HD-RX-201-C-E	DM Lite receiver mounted behind display	0.00
	2	Extron	60-1927-02	Cable Cubby 202-US, incl 1 AC outlet	0.00
	2	Extron	70-1043-02	Cable Cubby 202 Retractor bracket	0.00
	2	Extron	70-1065-03	Retractor Series Network CAT6, 3 feet	
	2	Extron	70-1065-04	Retractor Series XL HDMI, 3 feet	
	134 HEADEND	1	Z-Band	ZBT0100051	Z-Distribution ZHC 16F / 16 port Hub 54-860MHz w/AGC (CATV OVER UTP)
GENERAL BUILDING	2	Williams Sound	FM ADA KIT 37	Portable Assistive Listening Systems	
SUBTOTAL					

SCHEDULE A

STOCKTON CITY HALL BLDG 1 FL 2

LOCATION	QTY	MANUFACTURER	MODEL #	ITEM DESCRIPTION	COST	EXT. COST
1-208 CONF	1	NEC	C651Q	65" 4K UHD Display		0.00
	1	Chief	RXF2	Fixed Wall Bracket		0.00
	1	Chief	PAC525	Flush mount backbox for AV and power		0.00
	1	Crestron	HD-TX-301-C-E	DM Lite - 2 HDMI 1 VGA 3x1 auto switcher transmitter under table		0.00
	1	Crestron	HD-RX-101-C-E	DM Lite receiver mounted behind display		0.00
	2	Extron	60-1927-02	Cable Cubby 202-US, incl 1 AC outlet		0.00
	2	Extron	70-1043-02	Cable Cubby 202 Retractor bracket		0.00
	2	Extron	70-1065-03	Retractor Series Network CAT6, 3 feet		0.00
1-209 SM CONF	2	Extron	70-1065-04	Retractor Series XL HDMI, 3 feet		0.00
	1	NEC	C501	50" Thin Depth Commerical Display		0.00
1-212 ATT LIB	1	Chief	RXF2	Fixed Wall Bracket		0.00
	1	Chief	PAC525	Flush mount backbox for AV and power		0.00
	1	Z-Band	ZBT0010085	Impedance matching balun for Receiver endpoints		0.00
1-213 SM CONF	1	NEC	C551	55" Thin Depth Commerical Display		0.00
	1	Chief	RXF2	Fixed Wall Bracket		0.00
	1	Chief	PAC525	Flush mount backbox for AV and power		0.00
	1	Extron	60-1927-02	Cable Cubby 202-US, incl 1 AC outlet		0.00
1-213 SM CONF	1	NEC	C501	50" Thin Depth Commerical Display		0.00
	1	Chief	RXF2	Fixed Wall Bracket		0.00
	1	Chief	PAC525	Flush mount backbox for AV and power		0.00
	1	Crestron	MP-BP152	HDMI Passive 1G wall plate		0.00
1-231 OFFICE	1	Samsung	50TU8000	50" Crystal UHD Smart TV		0.00
	1	Sanus	VMPL50A-B1	Low profile Tilt wall mount		0.00
	1	Z-Band	ZBT0010085	Impedance matching balun for Receiver endpoints		0.00
1-240 LIBRARY BREAKROOM	1	Samsung	55TU8000	55" Crystal UHD Smart TV		0.00
	1	Sanus	VMPL50A-B1	Low profile Tilt wall mount		0.00
	1	Z-Band	ZBT0010085	Impedance matching balun for Receiver endpoints		0.00
IDF	1	Z-Band	ZBT0100050	CATV Z-Distribution ZHC 8F / 8 port Hub 54-860MHz w/AGC		
SUBTOTAL						

SCHEDULE A

STOCKTON CITY HALL BLDG 1 FL 3

LOCATION	QTY	MANUFACTURER	MODEL #	ITEM DESCRIPTION	COST	EXT. COST	
1-308 TRAINING	1	NEC	C861Q	86" 4K UHD Commercial Display		0.00	
	1	Chief	RXF2	Fixed Wall Mount		0.00	
	1	Chief	PAC525	Flush mount backbox for AV and power		0.00	
	1	Crestron	MPC3-201-B	Media presentation controller, wall mounted		0.00	
	1	Crestron	PWE-4803RU	PoE Injector for MPC3-201		0.00	
	1	Williams AV	IR T1	ALS IR Transmitter		0.00	
	4	Community	D8	Commercial 8" flush mount ceiling speaker, black		0.00	
	1	Extron	60-1761-02	XPA U 1002-70V 2-ch amplifier 70V		0.00	
	1	Crestron	C2N-VEQ4	4-Ch Vol + EQ DSP		0.00	
	1	Crestron	MP-BP152-B	Passive 1G HDMI Wall Plate		0.00	
	1	Shure	SLXD124/85	SLXD2/58 Tx, SLXD1 Bodypack Tx, WL185, SLXD4 Rx		0.00	
	1	Middle Atlantic	CFR-8-18	In-Cabinet 8RU x 18"D AV rack		0.00	
	1	Middle Atlantic	PD-915R	9-15A 1U power strip		0.00	
	1-310 CONF	1	NEC	C651Q	65" 4K UHD Display		0.00
		1	Chief	RXF2	Fixed Wall Mount		0.00
1		Chief	PAC525	Flush mount backbox for AV and power		0.00	
1		Crestron	HD-TX-301-C-E	DM Lite - 2 HDMI 1 VGA 3x1 auto switcher transmitter under table		0.00	
1		Crestron	HD-RX-101-C-E	DM Lite receiver mounted behind display		0.00	
2		Extron	60-1927-02	Cable Cubby 202-US, incl 1 AC outlet		0.00	
2		Extron	70-1043-02	Cable Cubby 202 Retractor bracket		0.00	
2		Extron	70-1065-03	Retractor Series Network CAT6, 3 feet		0.00	
1-328 CONF	2	Extron	70-1065-04	Retractor Series XL HDMI, 3 feet		0.00	
	1	NEC	C501	50" Thin Depth Commercial Display		0.00	
	1	Chief	RXF2	Fixed Wall Mount		0.00	
	1	Chief	PAC525	Flush mount backbox for AV and power		0.00	
IDF	1	Extron	60-1927-02	Cable Cubby 202-US, incl 1 AC outlet		0.00	
	1	Z-Band	ZBT0100050	CATV Z-Distribution ZHC 8F / 8 port Hub 54-860MHz w/AGC		0.00	
SUBTOTAL						0.00	

SCHEDULE A

STOCKTON CITY HALL BLDG 1 FL 4

LOCATION	QTY	MANUFACTURER	MODEL #	ITEM DESCRIPTION	COST	EXT. COST
1-418 CONF	1	NEC	C551	55" Thin Depth Commerical Display		0.00
	1	Chief	RXF2	Fixed Wall Bracket		0.00
	1	Chief	PAC525	Flush mount backbox for AV and power		0.00
	1	Extron	60-1927-02	Cable Cubby 202-US, incl 1 AC outlet		0.00
1-421 CONF	1	NEC	C501	50" Thin Depth Commerical Display		0.00
	1	Chief	RXF2	Fixed Wall Bracket		0.00
	1	Chief	PAC525	Flush mount backbox for AV and power		0.00
	1	Extron	60-1927-02	Cable Cubby 202-US, incl 1 AC outlet		0.00
1-422 LG CONF	2	NEC	V754Q	75" 4K UHD Display 500 nit		0.00
	2	Chief	PNRIWUB	In-Wall Swing arm mount		0.00
	2	Chief	PAC501	In-Wall Box for PNRIWUB		0.00
	1	Crestron	MP-BP152-B	HDMI Passive 1G wall plate		0.00
	1	Crestron	MPC3-201-B	Media presentation controller, wall mounted		0.00
	1	Crestron	PWE-4803RU	PoE Injector for MPC3-201		0.00
	7	Community	D8	Commercial 8" flush mount ceiling speaker, black		0.00
	1	Williams AV	IR T1	ALS IR Transmitter		0.00
	1	Extron	60-1761-02	XPA U 1002-70V 2-ch amplifier 70V		0.00
	1	Crestron	C2N-VEQ4	4-Ch Vol + EQ DSP		0.00
	1	Crestron	MP-BP152-B	Passive 1G HDMI Wall Plate		0.00
	1	Shure	SLXD124/85	SLXD2/58 Tx, SLXD1 Bodypack Tx, WL185, SLXD4 Rx		0.00
1	Middle Atlantic	CFR-8-18	In-Cabinet 8RU x 18"D AV rack		0.00	
1	Middle Atlantic	PD-915R	9-15A 1U power strip		0.00	
1-423 CONF	1	NEC	C751Q	75" 4K UHD Commercial Display		0.00
	1	Chief	RXF2	Fixed Wall Bracket		0.00
	1	Chief	PAC525	Flush mount backbox for AV and power		0.00
	2	Extron	60-1927-02	Cable Cubby 202-US, incl 1 AC outlet		0.00
	2	Extron	70-1065-03	Retractor Series Network CAT6, 3 feet		0.00
	2	Extron	70-1065-04	Retractor Series XL HDMI, 3 feet		0.00
1-428 CONF	1	NEC	C501	50" Thin Depth Commerical Display		0.00
	1	Chief	RXF2	Fixed Wall Bracket		0.00
	1	Chief	PAC525	Flush mount backbox for AV and power		0.00
	1	Extron	60-1927-02	Cable Cubby 202-US, incl 1 AC outlet		0.00
	1	Crestron	MP-BP152-B	Passive 1G HDMI Wall Plate		0.00
IDF	1	Z-Band	ZBT0100050	CATV Z-Distribution ZHC 8F / 8 port Hub 54-860MHz w/AGC		0.00
SUBTOTAL						

SCHEDULE A

STOCKTON CITY HALL BLDG 1 FL 5

LOCATION	QTY	MANUFACTURER	MODEL #	ITEM DESCRIPTION	COST	EXT. COST
511 OFFICE	1	Samsung	43TU8000	43" Crystal UHD Smart TV		
	1	Sanus	VMPL50A-B1	Low profile Tilt wall mount		
	1	Z-Band	ZBT0010085	Impedance matching balun for Receiver endpoints		
512 OFFICE	1	Samsung	43TU8000	43" Crystal UHD Smart TV		
	1	Sanus	VMPL50A-B1	Low profile Tilt wall mount		
	1	Z-Band	ZBT0010085	Impedance matching balun for Receiver endpoints		
513 OFFICE	1	Samsung	43TU8000	43" Crystal UHD Smart TV		
	1	Sanus	VMPL50A-B1	Low profile Tilt wall mount		
	1	Z-Band	ZBT0010085	Impedance matching balun for Receiver endpoints		
516 OFFICE	1	Samsung	43TU8000	43" Crystal UHD Smart TV		
	1	Sanus	VMPL50A-B1	Low profile Tilt wall mount		
	1	Z-Band	ZBT0010085	Impedance matching balun for Receiver endpoints		
518 OFFICE	1	Samsung	43TU8000	43" Crystal UHD Smart TV		
	1	Sanus	VMPL50A-B1	Low profile Tilt wall mount		
	1	Z-Band	ZBT0010085	Impedance matching balun for Receiver endpoints		
519 OFFICE	1	Samsung	43TU8000	43" Crystal UHD Smart TV		
	1	Sanus	VMPL50A-B1	Low profile Tilt wall mount		
	1	Z-Band	ZBT0010085	Impedance matching balun for Receiver endpoints		
521 OFFICE	1	Samsung	43TU8000	43" Crystal UHD Smart TV		
	1	Sanus	VMPL50A-B1	Low profile Tilt wall mount		
	1	Z-Band	ZBT0010085	Impedance matching balun for Receiver endpoints		
520 CONF	1	Samsung	55TU8000	55" Crystal UHD Smart TV		
	1	Sanus	VMPL50A-B1	Low profile Tilt wall mount		
	1	Z-Band	ZBT0010085	Impedance matching balun for Receiver endpoints		
	1	Crestron	MP-BP152-B	HDMI Passive 1G wall plate		
1-542 MAYOR	1	NEC	M551	55" Thin Depth Commerical Display		
	1	Chief	RXF2	Fixed Wall Bracket		
	1	Chief	PAC525	Flush mount backbox for AV and power		
	1	Z-Band	ZBT0010085	Impedance matching balun for Receiver endpoints		
1-526 LG CONF	1	NEC	C861Q	86" 4K UHD Display		
	1	Chief	RXF2	Fixed Wall Bracket		
	1	Chief	PAC525	Flush mount backbox for AV and power		
	1	Crestron	MPC3-201-B	Media presentation controller, wall mounted		
	4	Community	D8	Commercial 8" flush mount ceiling speaker, black		
	1	Extron	60-1761-02	XPA-U 1002 2-CH 100W/ch amplifier		
	1	Williams AV	IR T1	ALS IR Transmitter		
	1	Crestron	HD-TX-301-C-E	DM Lite - 2 HDMI 1 VGA 3x1 auto switcher transmitter under table		
	1	Crestron	HD-RX-101-C-E	DM Lite receiver mounted behind display		
	1	Crestron	C2N-VEQ4	4-Ch Vol + EQ DSP		
	2	Extron	60-1927-02	Cable Cubby 202-US, incl 1 AC outlet		
	2	Extron	70-1065-03	Retractor Series Network CAT6, 3 feet		
	2	Extron	70-1065-04	Retractor Series XL HDMI, 3 feet		
1	Middle Atlantic	PD-915R	9-15A 1U power strip			
1	Middle Atlantic	SRSR12	Slide out 12U equipment rack			
1	Netgear	GSM4328PA	M300-28G-POE+ media switch			
1	Z-Band	ZBT0010085	Impedance matching balun for Receiver endpoints			
1-530 CONF	1	NEC	C501	50" Thin Depth Commerical Display		
	1	Chief	RXF2	Fixed Wall Bracket		
	1	Chief	PAC525	Flush mount backbox for AV and power		
	1	Extron	60-1927-02	Cable Cubby 202-US, incl 1 AC outlet		
1-535 STAT RM	3	NEC	C861Q	86" 4K UHD Display		
	2	Chief	XCM7000	XL Dual Pole Ceiling Mount		
	3	Chief	FCAC1XB	Fusion flat panel back cover		
	1	Chief	RXF2	Fixed Wall Bracket		
	1	Chief	PAC525	Flush mount backbox for AV and power		
	14	Shure	MX412S/S	12" supercardioid gooseneck with mute sw, preamp, shockmount, for dais		
	1	Shure	MX-418/C	18" cardioid gooseneck with preamp, shockmount, for lectern		
	1	Williams AV	IR T1	ALS IR Transmitter		
	1	QSC	Core 8 Flex	Q-SYS Audio DSP		
	1	Crestron	TSW-1070-B-S	10" touch panel, wall mounted		
	1	Crestron	DM-MD-8x8-CPU3-RPS	Digital Media 8x8 matrix switcher with redundant power		
	2	Crestron	DMC-4KZ-C-DSP	DM8G+ 4K60 input card with DSP audio for DM switchers		
	1	Crestron	DMC-4KZ-HD	HD 4K60 input card for DM switchers		
2	Crestron	DMC-4KZ-CO-HD	2-channel DM8G+ 4K60 output card for DM switchers			
1	Crestron	DMC-4KZ-HDO	2-channel HD 4K60 output card for DM switchers			
1	Crestron	CP4N	Media system controller			
3	Crestron	DM-RMC-4KZ-SCALER-C	DM 4K scaling receiver			

	2	Crestron	DM-TX-4KZ-100-C-1G-B-T	DM 4K 1-gang transmitter
	1	Extron	60-1761-02	XPA-U 1002 2-CH 100W/ch amplifier
	8	QSC	AC-D8T-BH	Commercial 8" flush mount ceiling speaker, black
	1	Contemporary Research	232-ATSC 4K HDTV	CATV ATSC Tuner
	1	Contemporary Research	RK1EZ	Rack kit
	1	Shure	SLXD124/85	SLXD2/58 Tx, SLXD1 Bodypack Tx, WL185, SLXD4 Rx
	2	Extron	60-1927-02	Cable Cubby 202-US, incl 1 AC outlet
	1	Middle Atlantic	SRSR4-12	12RU Pull-Out Cabinet Rack
	2	Middle Atlantic	PD-915R	9-15A 1U power strip
	3	Z-Band	ZBT0010085	Impedance matching balun for Receiver endpoints
1-536 INNOV LAB	1	NEC	C861Q	86" 4K UHD Display
	1	Chief	RXF2	Fixed Wall Bracket
	1	Chief	PAC525	Flush mount backbox for AV and power
	1	Crestron	MP-BP152-B	HDMI Passive 1G wall plate
	1	Z-Band	ZBT0010085	Impedance matching balun for Receiver endpoints
IDF	1	Z-Band	ZBT0100051	CATV Z-Distribution ZHC 16F / 16 port Hub 54-860MHz w/AGC
SUBTOTAL				

SCHEDULE A

STOCKTON CITY HALL BLDG 2 FL 1

LOCATION	QTY	MANUFACTURER	MODEL #	ITEM DESCRIPTION	COST	EXT. COST
2-101 PUBLIC LOBBY	3	NEC	C431	43" thin depth commerical display		0.00
	3	Chief	MCM1U	Medium flat panel ceiling mount		0.00
	3	Chief	CMA110	8"Ceiling mount plate		0.00
	3	Chief	CMS0305	3-5' Adjustable Extension Column		0.00
	3	Kramer	TP-580R	HDBT Receiver		0.00
	4	Community	D8	Flush mount ceiling speaker		0.00
2-113 BLDG COUNTER	1	NEC	C431	43" thin depth commerical display		0.00
	1	Chief	MCM1U	Medium flat panel ceiling mount		0.00
	1	Chief	CMA110	8"Ceiling mount plate		0.00
	1	Chief	CMS0305	3-5' Adjustable Extension Column		0.00
	1	Kramer	TP-580R	HDBT Receiver		0.00
	1	Community	D8	Flush mount ceiling speaker		0.00
2-103 CONF RM	1	NEC	C754Q	75" 4K UHD Commercial Display 500 nit		0.00
	1	Chief	RXF2	Fixed Wall Bracket		0.00
	1	Chief	PAC525	Flush mount backbox for AV and power		0.00
	2	Extron	60-1927-02	Cable Cubby 202-US, incl 1 AC outlet		0.00
	3	Extron	70-1065-03	Retractor Series Network CAT6, 3 feet		0.00
	3	Extron	70-1065-04	Retractor Series XL HDMI, 3 feet		0.00
	1	Crestron	HD-TX-301-C-E	DM Lite - 2 HDMI 1 VGA 3x1 auto switcher transmitter under table		0.00
	1	Crestron	HD-RX-101-C-E	DM Lite receiver mounted behind display		0.00
	1	Kramer	VS-21DT	2x1 HDMI Auto Sw with HDBT output TX		0.00
AV closet TBD	1	Kramer	VM-4DT	1x4 HDBT transmitter		0.00
	1	Extron	60-850-01	XPA 2001 200W 70V amplifier		0.00
GENERAL BUILDING	2	Williams Sound	FM ADA KIT 37	Portable Assistive Listening Systems		0.00
SUBTOTAL						0.00

SCHEDULE A

STOCKTON CITY HALL BLDG 2 FL 2

LOCATION	QTY	MANUFACTURER	MODEL #	ITEM DESCRIPTION	COST	EXT. COST
2-209 CONF RM	1	NEC	C501	50" Thin Depth Commerical Display		0.00
	1	Chief	RXF2	Fixed Wall Bracket		0.00
	1	Chief	PAC525	Flush mount backbox for AV and power		0.00
	1	Crestron	MP-BP152	HDMI Passive 1G wall plate		0.00
2-225 CONF	1	NEC	C501	50" Thin Depth Commerical Display		0.00
	1	Chief	RXF2	Fixed Wall Bracket		0.00
	1	Chief	PAC525	Flush mount backbox for AV and power		0.00
	1	Extron	60-1927-02	Cable Cubby 202-US, incl 1 AC outlet		
	1	Extron	60-1927-02	Cable Cubby 202-US, incl 1 AC outlet		0.00
	1	Crestron	HD-TX-301-C-E	DM Lite - 2 HDMI 1 VGA 3x1 auto switcher transmitter under table		0.00
	1	Crestron	HD-RX-101-C-E	DM Lite receiver mounted behind display		0.00
2-232 CONF RM	1	NEC	C501	50" Thin Depth Commerical Display		0.00
	1	Chief	RXF2	Fixed Wall Bracket		0.00
	1	Chief	PAC525	Flush mount backbox for AV and power		0.00
	1	Extron	60-1927-02	Cable Cubby 202-US, incl 1 AC outlet		
	1	Extron	60-1927-02	Cable Cubby 202-US, incl 1 AC outlet		0.00
	1	Crestron	HD-TX-301-C-E	DM Lite - 2 HDMI 1 VGA 3x1 auto switcher transmitter under table		0.00
	1	Crestron	HD-RX-101-C-E	DM Lite receiver mounted behind display		0.00

SUBTOTAL

SCHEDULE A

STOCKTON CITY HALL BLDG 2 FL 3

LOCATION	QTY	MANUFACTURER	MODEL #	ITEM DESCRIPTION	COST	EXT. COST
2-313 CONF	1	NEC	C501	50" Thin Depth Commerical Display		
	1	Chief	RXF2	Fixed Wall Bracket		
	1	Chief	PAC525	Flush mount backbox for AV and power		
	1	Extron	60-1927-02	Cable Cubby 202-US, incl 1 AC outlet		
	1	Crestron	HD-TX-301-C-E	DM Lite - 2 HDMI 1 VGA 3x1 auto switcher transmitter under table		
	1	Crestron	HD-RX-101-C-E	DM Lite receiver mounted behind display		
	1	Extron	70-1043-02	Cable Cubby 202 Retractor bracket		
	1	Extron	70-1065-03	Retractor Series Network CAT6, 3 feet		
	1	Extron	70-1065-04	Retractor Series XL HDMI, 3 feet		
2-318 CONF	1	NEC	C501	50" Thin Depth Commerical Display		
	1	Chief	RXF2	Fixed Wall Bracket		
	1	Chief	PAC525	Flush mount backbox for AV and power		
	1	Extron	60-1927-02	Cable Cubby 202-US, incl 1 AC outlet		
	1	Crestron	HD-TX-301-C-E	DM Lite - 2 HDMI 1 VGA 3x1 auto switcher transmitter under table		
	1	Crestron	HD-RX-101-C-E	DM Lite receiver mounted behind display		
	1	Extron	70-1043-02	Cable Cubby 202 Retractor bracket		
	1	Extron	70-1065-03	Retractor Series Network CAT6, 3 feet		
	1	Extron	70-1065-04	Retractor Series XL HDMI, 3 feet		
2-331 CONF	1	NEC	C651Q	65" 4K UHD Display		
	1	Chief	RXF2	Fixed Wall Bracket		
	1	Chief	PAC525	Flush mount backbox for AV and power		
	1	Crestron	HD-TX-301-C-E	DM Lite - 2 HDMI 1 VGA 3x1 auto switcher transmitter under table		
	1	Crestron	HD-RX-101-C-E	DM Lite receiver mounted behind display		
	2	Extron	60-1927-02	Cable Cubby 202-US, incl 1 AC outlet		
	2	Extron	70-1043-02	Cable Cubby 202 Retractor bracket		
	2	Extron	70-1065-03	Retractor Series Network CAT6, 3 feet		
2-320 TR OFFICE	1	NEC	C431	43" Commerical Display		
	1	Chief	RXF2	Fixed Wall Bracket		
	1	Chief	PAC525	Flush mount backbox for AV and power		
	1	Crestron	DM-NVX-D30	4K60 4:4:4 HDR Network AV Decoder (for Traffic Ctl)		
	1	NEC	C431	43" Commerical Display		
2-322 TR OFFICE	1	NEC	C431	43" Commerical Display		
	1	Chief	RXF2	Fixed Wall Bracket		
	1	Chief	PAC525	Flush mount backbox for AV and power		
	1	Crestron	DM-NVX-D30	4K60 4:4:4 HDR Network AV Decoder (for Traffic Ctl)		
	2-340 TR OFFICE	1	NEC	C501	50" Thin Depth Commerical Display	
1		Chief	RXF2	Fixed Wall Bracket		
1		Chief	PAC525	Flush mount backbox for AV and power		
1		Crestron	DM-NVX-D30	4K60 4:4:4 HDR Network AV Decoder (for Traffic Ctl)		
2-341 TR OFFICE		1	NEC	C501	50" Thin Depth Commerical Display	
	1	Chief	RXF2	Fixed Wall Bracket		
	1	Chief	PAC525	Flush mount backbox for AV and power		
	1	Crestron	DM-NVX-D30	4K60 4:4:4 HDR Network AV Decoder (for Traffic Ctl)		
	2-342 TR OFFICE	1	NEC	C501	50" Thin Depth Commerical Display	
1		Chief	RXF2	Fixed Wall Bracket		
1		Chief	PAC525	Flush mount backbox for AV and power		
1		Crestron	DM-NVX-D30	4K60 4:4:4 HDR Network AV Decoder (for Traffic Ctl)		
2-346 TRAFFIC		1	Crestron	DM-NVX-E30	4K60 4:4:4 HDR Network AV Encoder (to Office NVX decoders)	
	1	Netgear	GSM4328PA	M300-28G-POE+ media switch		
	1	Chief	RXF2	Fixed Wall Bracket		
	1	Chief	PAC525	Flush mount backbox for AV and power (Infrastructure Only)		

SUBTOTAL

SCHEDULE A

STOCKTON CITY HALL BLDG 2 FL 4

LOCATION	QTY	MANUFACTURER	MODEL #	ITEM DESCRIPTION	COST	EXT. COST
2-414 CONF	1	NEC	C501	50" Thin Depth Commerical Display		0.00
	1	Chief	RXF2	Fixed Wall Bracket		0.00
	1	Chief	PAC525	Flush mount backbox for AV and power		0.00
	1	Extron	60-1927-02	Cable Cubby 202-US, incl 1 AC outlet		0.00
	1	Crestron	HD-TX-301-C-E	DM Lite - 2 HDMI 1 VGA 3x1 auto switcher transmitter under table		0.00
	1	Crestron	HD-RX-101-C-E	DM Lite receiver mounted behind display		0.00
2-421 PROJECT	1	NEC	C501	50" Thin Depth Commerical Display		0.00
	1	Chief	RXF2	Fixed Wall Bracket		0.00
	1	Chief	PAC525	Flush mount backbox for AV and power		0.00
	1	Extron	60-1927-02	Cable Cubby 202-US, incl 1 AC outlet		0.00
	1	Crestron	HD-TX-301-C-E	DM Lite - 2 HDMI 1 VGA 3x1 auto switcher transmitter under table		0.00
	1	Crestron	HD-RX-101-C-E	DM Lite receiver mounted behind display		0.00
2-425 CONF	1	NEC	C861Q	86" 4K UHD Display		0.00
	1	Chief	RXF2	Fixed Wall Bracket		0.00
	1	Chief	PAC525	Flush mount backbox for AV and power		0.00
	2	Extron	60-1927-02	Cable Cubby 202-US, incl 1 AC outlet		0.00
	2	Extron	70-1043-02	Cable Cubby 202 Retractor bracket		0.00
	1	Crestron	HD-TX-301-C-E	DM Lite - 2 HDMI 1 VGA 3x1 auto switcher transmitter under table		0.00
	1	Crestron	HD-RX-101-C-E	DM Lite receiver mounted behind display		0.00
	1	Crestron	HD-RX-101-C-E	DM Lite receiver mounted behind display		0.00
2-427 CONF	1	NEC	C861Q	86" 4K UHD Display		0.00
	1	Chief	RXF2	Fixed Wall Bracket		0.00
	1	Chief	PAC525	Flush mount backbox for AV and power		0.00
	3	Clearone	910-6200-101-W	CMA Tri-Element mic array		0.00
	3	Clearone	910-6200-102	CMA Mic in-ceiling junction box		0.00
	1	Clearone	910-6200-103	CMA Mic Interface		0.00
	1	Williams AV	IR T1	ALS IR Transmitter		0.00
	4	Community	D8	Commercial 8" flush mount ceiling speaker, Wht		0.00
	1	Crestron	HD-MD4X1-4KZ-E	4x1 HDMI Auto Switch		0.00
	1	Crestron	HD-TX-101-C-1G-E	DM Lite transmitter		0.00
	1	Crestron	HD-RX-101-C-E	DM Lite receiver mounted behind display		0.00
	1	Crestron	AM-3200	HDMI Presentation Wireless Gateway		0.00
	1	Crestron	MPC3-201-B	Media presentation controller, wall mounted		0.00
	1	Crestron	PWE-4803RU	PoE Injector for MPC3-201		0.00
	1	Crestron	DSP-1280	Audio DSP		0.00
	1	Extron	60-1761-02	XPA-U 1002 2-CH 100W/ch amplifier		0.00
	4	Extron	60-1927-02	Cable Cubby 202-US, incl 1 AC outlet		0.00
4	Extron	70-1065-03	Retractor Series Network CAT6, 3 feet		0.00	
4	Extron	70-1065-04	Retractor Series XL HDMI, 3 feet		0.00	
1	Rackmount Sol	URACK-4	4RU Under-table open frame		0.00	
1	Middle Atlantic	PD-915R	9-15A 1U power strip		0.00	
428 CONF	1	NEC	C501	50" Thin Depth Commerical Display		0.00
	1	Chief	RXF2	Fixed Wall Bracket		0.00
	1	Chief	PAC525	Flush mount backbox for AV and power		0.00
	1	Crestron	MP-BP152-B	Media wall plate		0.00
SUBTOTAL						0.00

SCHEDULE A

STOCKTON CITY HALL BLDG 2 FL 5

LOCATION	QTY	MANUFACTURER	MODEL #	ITEM DESCRIPTION	COST	EXT. COST
2-521 CONF RM	1	NEC	C501	50" Thin Depth Commerical Display		0.00
	1	Chief	RXF2	Fixed Wall Bracket		0.00
	1	Chief	PAC525	Flush mount backbox for AV and power		0.00
2-526 CONF RM	1	NEC	C651Q	65" 4K UHD Display		0.00
	1	Chief	RXF2	Fixed Wall Bracket		0.00
	1	Chief	PAC525	Flush mount backbox for AV and power		0.00
	1	Crestron	HD-TX-301-C-E	DM Lite - 2 HDMI 1 VGA 3x1 auto switcher transmitter under table		0.00
	1	Crestron	HD-RX-101-C-E	DM Lite receiver mounted behind display		0.00
	2	Extron	60-1927-02	Cable Cubby 202-US, incl 1 AC outlet		0.00
	2	Extron	70-1043-02	Cable Cubby 202 Retractor bracket		0.00
	2	Extron	70-1065-03	Retractor Series Network CAT6, 3 feet		0.00
2- 535 CONF RM	1	NEC	ME501	50" Thin Depth Commerical Display		0.00
	1	Chief	RXF2	Fixed Wall Bracket		0.00
	1	Chief	PAC525	Flush mount backbox for AV and power		0.00
	1	Extron	60-1927-02	Cable Cubby 202-US, incl 1 AC outlet		0.00
	1	Extron	70-1043-02	Cable Cubby 202 Retractor bracket		0.00
SUBTOTAL						0.00

Jan 11, 2022 - 5:30pm, / Kropp
 UNAUTHORIZED CHANGES & USES: M. Neils Engineering, Inc. preparing these plans will not be responsible for, or liable for unauthorized changes to or uses to these plans. All changes to these plans must be in writing and must be approved by M. Neils Engineering, Inc.

ABBREVIATIONS

A	AMPERES	LV	LOW VOLTAGE
AC	ALTERNATING CURRENT	MATL	MATERIAL
AFCI	ARC FAULT CIRCUIT INTERRUPTER	MAX.	MAXIMUM
A.F.F.	ABOVE FINISHED FLOOR	MDF	MAIN DISTRIBUTION FRAME
A.I.C.	AMPERE INTERRUPTING CAPACITY	MFR.	MANUFACTURER
AMP	AMPERE	MH	METAL HALIDE
APPROX	APPROXIMATE	MIN.	MINIMUM
AVHE	AUDIO VIDEO HEAD-END EQUIPMENT	MOG.	MOGUL BASE
AWG	AMERICAN WIRE GAUGE	MTD.	MOUNTED
BKR	BREAKER	N	NEUTRAL
C.	CONDUIT	(N)	NEW
C.B.	CIRCUIT BREAKER	NA	NOT AVAILABLE, NOT APPLICABLE
CD	CANDELA	NC	NORMALLY CLOSED
CKT	CIRCUIT	N.C.	NURSES CALL
CLF	CURRENT LIMITING FUSE	NEMA	NATIONAL ELECTRICAL MANUFACTURERS ASSOCIATION
C.O.	CONDUIT ONLY, WITH PULL WIRE	N.I.C.	NOT IN CONTRACT
(CR)	EMERGENCY - CRITICAL BRANCH OF POWER	N.I.E.S.	NOT IN ELECTRICAL SECTION OF THESE PLANS AND SPECIFICATIONS
C.T.	CURRENT TRANSFORMER	NL	NIGHT LIGHT
DC	DIRECT CURRENT	NM	NON-METALLIC CABLE
DF	DRINKING FOUNTAIN	NO	NORMALLY OPEN
DPST	DOUBLE POLE, SINGLE THROW	(NR)	NORMAL BRANCH OF POWER
(E)	EXISTING	OC	ON CENTER
EL	EVENING LIGHT	OH	OVERHEAD
(EQ)	EMERGENCY - EQUIPMENT BRANCH OF POWER	OISC	OIL INSULATED, SELF-COOLED
EM	EMERGENCY	PB	PULL BOX
(ER)	EXISTING RELOCATED	PFB	PROVISIONS FOR FUTURE CIRCUIT BREAKER
EMT	ELECTRICAL METALLIC CONDUIT	PH	PHASE
(F)	FUTURE	PVC	POLYVINYL CHLORIDE
FACP	FIRE ALARM CONTROL PANEL	QTY	QUANTITY
FAPS	FIRE ALARM POWER SUPPLY	(R)	REMOVE
FATC	FIRE ALARM TERMINAL CABINET	REQ'D	REQUIRED
F.C.	FOOTCANDLES	(RE)	RELOCATE EXISTING
FSD	FIRE SMOKE DAMPER	RCPT.	RECEPTACLE
GA.	GAUGE	RS	RAPID START
GALV.	GALVANIZED	SCHED	SCHEDULE
GND	GROUND	S.F.	SQUARE FOOT
GFCI	GROUND FAULT CIRCUIT INTERRUPTER	S.M.S	SHEET METAL SCREW
HD	HAND DRYER	SQ.	SQUARE
HID	HIGH INTENSITY DISCHARGE	SPDT	SINGLE POLE, DOUBLE THROW
HP	HORSEPOWER	SPST	SINGLE POLE, SINGLE THROW
HPF	HIGH POWER FACTOR	S.S.	STAINLESS STEEL
HPS	HIGH PRESSURE SODIUM	SWBD	SWITCHBOARD
HTR.	HEATER	SYS	SYSTEM
HVAC	HEATING, VENTILATING AND AIR CONDITIONING	THW	INSULATED STRAND WIRE
HZ.	HERTZ (CYCLES/SEC)	THHN	NYLON JACKETED WIRE
I.C.	INTERRUPTING CAPACITY	TV	TELEVISION
IDF	INTERMEDIATE DISTRIBUTION FRAME	TVSS	TRANSIENT VOLTAGE SURGE SUPPRESSION
IMC	INTERMEDIATE METAL CONDUIT	TYP.	TYPICAL
INCAN.	INCANDESCENT	UG	UNDERGROUND
Isc	SHORT CIRCUIT AMPERES	UGPS	UNDERGROUND PULL SECTION
ISO	ISOLATED	UL	UNDERWRITERS LABORATORY
K	THOUSAND	UNO	UNLESS NOTED OTHERWISE
KV	KILO VOLT	V	VOLT
KVA	KILO VOLT AMPERE	VA	VOLT-AMPERES
KW	KILO WATT	W	WIRE, WATT
KWH	KILO WATT HOUR	WP	WEATHER PROTECTED
L.L.D.	LAMP LUMEN DEPRECIATION	XFMR	TRANSFORMER
LM	LUMEN	XHHW	CROSS-LINKED POLYETHYLENE WIRE INSULATED
LPF	LOW POWER FACTOR	Y	WYE
LT.	LIGHT		
(LS)	EMERGENCY - LIFE SAFETY BRANCH OF POWER		

ELECTRICAL SYMBOL LIST

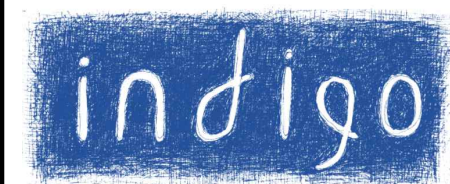
	LUMINAIRE - CEILING SURFACE OR PENDANT MOUNTED (LETTER "X" INDICATES TYPE, "a" DENOTES SWITCH FUNCTION, "ZZ-#" DENOTES BRANCH CIRCUITING - TYPICAL FOR ALL LUMINAIRES UNLESS NOTED OTHERWISE).		DATA OUTLET - FLUSH IN FLOOR. STUB ONE 1" CONDUIT WITH BUSHING AT THE END AND PULL ROPE INTO ACCESSIBLE CEILING AREA.
	DECORATIVE DISC LUMINAIRE - CEILING CABLE OR PENDANT		NEW WIRELESS ANTENNA CEILING MOUNTED ON SURFACE. XX DESIGNATES BUILDING, -00 DESIGNATES FLOOR, -01 DESIGNATES DEVICE NUMBER. INSTALL WITHIN 3'-0" RADIUS OF LOCATION SHOWN.
	LUMINAIRE - WALL MOUNTED		NEW WIRELESS ANTENNA EXTERIOR WALL MOUNTED WITH INTERIOR COMPONENT ACCESS POINT IN NEMA ENCLOSURE AT 8'-0" A.F.F. OR MOUNTING HEIGHT INDICATED ON PLAN. EXTERIOR DEVICES TO HAVE (2) ANTENNAS. XX DESIGNATES BUILDING, -00 DESIGNATES FLOOR, -01 DESIGNATES DEVICE NUMBER. TILT ANGLE IS WITH RESPECT TO THE VERTICAL PLANE. NO TILT DESIGNATION INDICATES VERTICAL SURFACE MOUNT. INSTALL WITHIN 3'-0" RADIUS OF LOCATION SHOWN.
	LUMINAIRE - CEILING RECESSED		CONDUIT RUN CONCEALED IN CEILINGS OR WALLS. NUMBER OF HASH MARKS DENOTES QUANTITY OF WIRES. CURVED HASH MARK DENOTES QUANTITY OF #12 GREEN GROUND WIRES. CONDUCTORS OTHER THAN #12 ARE INDICATED ON PLANS. NO HASH MARKS DENOTES #12 AWG AND 1 #12 GREEN GROUND IN 1/2" CONDUIT. TYPICAL FOR ALL CONDUITS.
	WALL MOUNTED EXIT LUMINAIRE. ARROW SIGNIFIES DIRECTION, TYPICAL.		FLEXIBLE CONDUIT CONCEALED. NUMBER OF HASH MARKS DENOTES QUANTITY OF WIRES. CURVED HASH MARK DENOTES QUANTITY OF #12 GREEN GROUND WIRES. CONDUCTORS OTHER THAN #12 ARE INDICATED ON PLANS. NO HASH MARKS DENOTES 2 #12 AWG AND 1 #12 GREEN GROUND IN 1/2" MINIMUM DIAMETER CONDUIT.
	CEILING OR PENDANT MOUNTED EXIT LUMINAIRE. ARROW SIGNIFIES DIRECTION, TYPICAL.		CONDUIT RUN UNDERFLOOR OR UNDERGROUND MINIMUM 1" DIAMETER.
	STRIP / COVE LUMINAIRE		CONDUIT HOMERUN TO PANELBOARD, SWITCHBOARD OR TERMINAL CABINET
	ENCLOSED LUMINAIRE - SURFACE MOUNTED		CONDUIT TURNED AND RISED UP
	ENCLOSED LUMINAIRE - CEILING LAY-IN		CONDUIT TURNED AND DROPPED DOWN
	ENCLOSED LUMINAIRE - CEILING RECESSED		CONDUIT WITH CAP
	EMERGENCY ENCLOSED LUMINAIRE		CONDUIT STUB WITH INSULATED BUSHING
	SUSPENDED LINEAR FIXTURE		EXISTING CONDUIT AND WIRING
	WALL MOUNTED LINEAR FIXTURE		EXISTING CONDUIT TO BE REMOVED OR ABANDONED, REMOVE WIRES. COORDINATE WITH OWNER.
	CEILING RECESSED / SURFACE LINEAR FIXTURE		PANELBOARD - SURFACE MOUNTED
	ONE-ARM BRACKET LUMINAIRE, WITH POLE AND BASE		PANELBOARD - FLUSH MOUNTED
	TWO-ARM BRACKET LUMINAIRE, 180 DEGREE ANGLE, WITH POLE AND BASE		EXISTING PANELBOARD - SURFACE MOUNTED
	THREE-ARM BRACKET LUMINAIRE, 180 DEGREE ANGLE, WITH POLE AND BASE		EXISTING PANELBOARD - FLUSH MOUNTED
	EXISTING LUMINAIRE TO BE REMOVED		TERMINAL CABINET
	RELOCATE EXISTING LUMINAIRE		SWITCHBOARD, DISTRIBUTION PANEL, OR MOTOR CONTROL CENTER
	IN-GROUND LANDSCAPE UPLIGHT		EQUIPMENT DISCONNECT SWITCH - EXTERNALLY OPERATED, FUSED WITH FUSE SIZE TO MATCH EQUIPMENT NAMEPLATE
	BATTERY PACK EMERGENCY LIGHT FIXTURE - WALL OR CEILING MOUNTED		EQUIPMENT DISCONNECT SWITCH - EXTERNALLY OPERATED, NON-FUSIBLE
	SWITCH, +44" A.F.F. - "a,b" LETTER DENOTES MULTI-SWITCH FUNCTION, TYPICAL FOR ALL SWITCHES, MOTION SENSORS AND DAYLIGHT SENSORS UNLESS NOTED OTHERWISE. "K" DENOTES SINGLE POLE TOGGLE SWITCH.		EQUIPMENT CONTROLLER
	DIMMER SWITCH - SIZE AS NOTED ON PLAN		TOGGLE TYPE MOTOR RATED DISCONNECT SWITCH WITH OVERLOAD PROTECTION
	DIGITAL DIMMER SWITCH WITH INTEGRATED OCCUPANCY SENSOR - SIZE AS NOTED ON PLAN		EQUIPMENT MOTOR POWER CONNECTIONS PART OF ELECTRICAL WORK
	OCCUPANCY SENSOR SWITCH WITH MANUAL OVERRIDE - WALL MOUNTED AT +44" A.F.F. UNLESS NOTED OTHERWISE		MECHANICAL EQUIPMENT DESIGNATION - SEE MECHANICAL PLANS
	OCCUPANCY SENSOR - WALL MOUNTED AT +96" A.F.F. UNLESS NOTED OTHERWISE		DRAWING SHEET NUMBERED NOTE DESIGNATION - APPLIES TO NUMBERED NOTE ON SAME SHEET
	OCCUPANCY AREA SENSOR SWITCH - CEILING MOUNTED OS = OCCUPANCY SENSOR; PC = PHOTOCELL; DL = DAYLIGHT		DRAWING PLAN OR DETAIL DESIGNATION - "1" OR "A" DENOTES PLAN OR DETAIL NUMBER, "E-1" DENOTES SHEET NUMBER
	JUNCTION BOX - SIZE AS REQUIRED BY CODE		ELECTRICAL TRANSFORMER. RATING PER SPECIFICATIONS.
	JUNCTION BOX - FLUSH FLOOR MOUNTED - SIZE AS REQUIRED BY CODE		ELECTRICAL PULL BOX. SIZE PER SPECIFICATIONS.
	DUPLEX CONVENIENCE OUTLET - NEMA 5-20R +18" A.F.F. TYPICAL FOR ALL CONVENIENCE OUTLETS, UNLESS NOTED OTHERWISE. (LETTER "A" SHOWN ADJACENT TO OUTLET DESIGNATES MOUNTED HORIZONTALLY ABOVE COUNTER AT +44" A.F.F., "+XX" INDICATES MOUNTING HEIGHT OTHER THAN 18" OR "A", "ZZ-#" INDICATES BRANCH CIRCUITING - TYPICAL FOR ALL OUTLETS UNLESS NOTED OTHERWISE)		ELECTRICAL EQUIPMENT TAG. SEE EQUIPMENT SCHEDULE FOR POWER REQUIREMENTS.
	DUPLEX CONVENIENCE OUTLET - NEMA 5-20R +18" A.F.F.: (1) UNCONTROLLED RECEPTACLE, AND (1) CONTROLLED RECEPTACLE WITH A PERMANENT MARKING TO DIFFERENTIATE FROM THE UNCONTROLLED RECEPTACLES		
	USB / DUPLEX COMBINATION 2 USB 2.0 TYPE		
	GFCI DUPLEX CONVENIENCE OUTLET - NEMA 5-20R		
	GFCI DUPLEX CONTROLLED RECEPTACLE - NEMA 5-20R FOR BACKLIT MIRROR.		
	QUADPLEX CONVENIENCE OUTLET - NEMA 5-20R		
	QUADPLEX CONVENIENCE OUTLET - NEMA 5-20R: (1) UNCONTROLLED DUPLEX RECEPTACLE, AND (1) CONTROLLED DUPLEX RECEPTACLE WITH A PERMANENT MARKING TO DIFFERENTIATE FROM THE UNCONTROLLED RECEPTACLES		
	GFCI QUAD CONVENIENCE OUTLET - NEMA 5-20R		
	CEILING MOUNTED DUPLEX RECEPTACLE		
	SPECIAL RECEPTACLE AS SHOWN ON PLANS		
	PLUG-IN STRIP - LENGTH AS SHOWN ON PLAN		
	DIVIDED METAL POWER POLE, FLOOR TO CEILING WITH ONE COMPARTMENT FOR POWER CONDUCTORS AND DUPLEX RECEPTACLE, THE OTHER COMPARTMENT FOR VOICE DATA CABLING, COMPLETE WITH ALL MOUNTING HARDWARE.		
	IN-FLOOR MULTI-SERVICE BOX WITH FLUSH ACCESSIBLE LID, 2 DUPLEX RECEPTACLES (POWER), DATA OUTLETS. REFER TO PLAN FOR SPECIFIC REQUIREMENTS.		
	FLOOR MOUNTED DUPLEX CONVENIENCE OUTLET - NEMA 5-20R		
	DATA OUTLET - FLUSH IN WALL +18" A.F.F. TWO DATA JACKS MIN. UNLESS NOTED OTHERWISE WITH PARENTHESIS. WHERE CONDUIT IS USED, 1" CONDUIT WITH A 4 11/16" SQUARE BOX 2 1/8" DEEP SHALL BE PLACED TO EACH COMMUNICATIONS OUTLET. PROVIDE CABLING TO NEAREST RACK.		
	DATA OUTLET - FLUSH IN CEILING. TWO DATA JACKS MIN. UNLESS NOTED OTHERWISE WITH PARENTHESIS. WHERE CONDUIT IS USED, 1" CONDUIT WITH A 4 11/16" SQUARE BOX 2 1/8" DEEP SHALL BE PLACED TO EACH COMMUNICATIONS OUTLET. PROVIDE CABLING TO NEAREST RACK.		
	IN WALL DEVICE BOX WITH DESIGNATED AV AND POWER OUTLETS.		


OTHER SYMBOL LEGENDS

SEE AV, SECURITY, AND MECHANICAL DRAWINGS FOR ALL DEVICES. CONTRACTOR RESPONSIBLE FOR COORDINATING ALL POWER AND DATA REQUIREMENTS BETWEEN ALL DISCIPLINES.

SYMBOL LIST NOTES:

- MINIMUM CONDUCTOR SIZE FOR 120V BRANCH CIRCUITS SHALL BE #12AWG. AT A MINIMUM ALL BRANCH CIRCUITS SHALL CONTAIN 3/4"C, 2#12 AWG AND 1#12 GND CONDUIT UNLESS OTHERWISE INDICATED.
- EXISTING ELECTRICAL EQUIPMENT, OUTLETS, AND DEVICES ARE SHOWN THE SAME AS NEW, EXCEPT LIGHTLY AND ACCOMPANIED BY (E). SUCH ELECTRICAL EQUIPMENT, OUTLETS, AND DEVICES ARE TO REMAIN AS IS, UNLESS OTHERWISE NOTED ON PLAN OR SPECIFICATION.
- ELECTRICAL OUTLET BOXES MOUNTED ON OPPOSITE SIDES OF FIRE-RATED WALLS OR PARTITIONS SHALL BE SEPARATED BY A HORIZONTAL DISTANCE OF NOT LESS THAN 24 INCHES PER CBC, WHETHER SHOWN ON THE PLANS OR NOT.
- VERIFY ON SITE THAT ALL PANELBOARDS HAVE MINIMUM WORKING SPACES PER CODE AND THAT THE DEDICATED PANELBOARD SPACES ARE CLEAR OF ALL DUCTS, PIPING AND EQUIPMENT FOREIGN TO THE PANEL BOARDS. NOTIFY THE ENGINEER FOR CORRECTIVE ACTION IN THE EVENT THAT FOREIGN OBJECTS IMPEDE THE DEDICATED PANELBOARD AREAS.
- WHERE CONDUIT STUB IS INDICATED, PROVIDE CONDUIT WITH BUSHING AT THE END OF CONDUIT AND PULL ROPE INTO ACCESSIBLE CEILING AREA.

Architect

HAMMOND+PLAYLE
 ARCHITECTS, LLP
 art, architecture + ecology
 909 FIFTH STREET, DAVIS, CA
 530.750.0756 WWW.INDIGOARCH.COM

Consultant

M. NEILS
 ENGINEERING, INC.
 Electrical Engineers | Lighting Designers
 100 Howe Ave., Suite 235N
 Sacramento, CA 95825-9217
 www.mneilsengineering.com
 Tel: (916) 923-4400 Fax: (916) 923-4410
 PROJECT #: 18337.21

REGISTERED PROFESSIONAL ENGINEER
 ELEC. - U.S.A. STATE OF CALIFORNIA
 No. E20229
 Exp. 03-31-23

01-12-22

Agency Approvals

City Approvals
Public Works Department
 Approved by _____
 Date _____
 City Engineer, Stockton, CA

Issue: 100% CONSTRUCTION DOCUMENTS

No.	Date	Description
1	01-18-22	LOC No. 2

Project
NEW CITY HALL RENOVATIONS & RELOCATION PROJECT
 501 & 509 West Weber Ave.
 Stockton, CA 95203

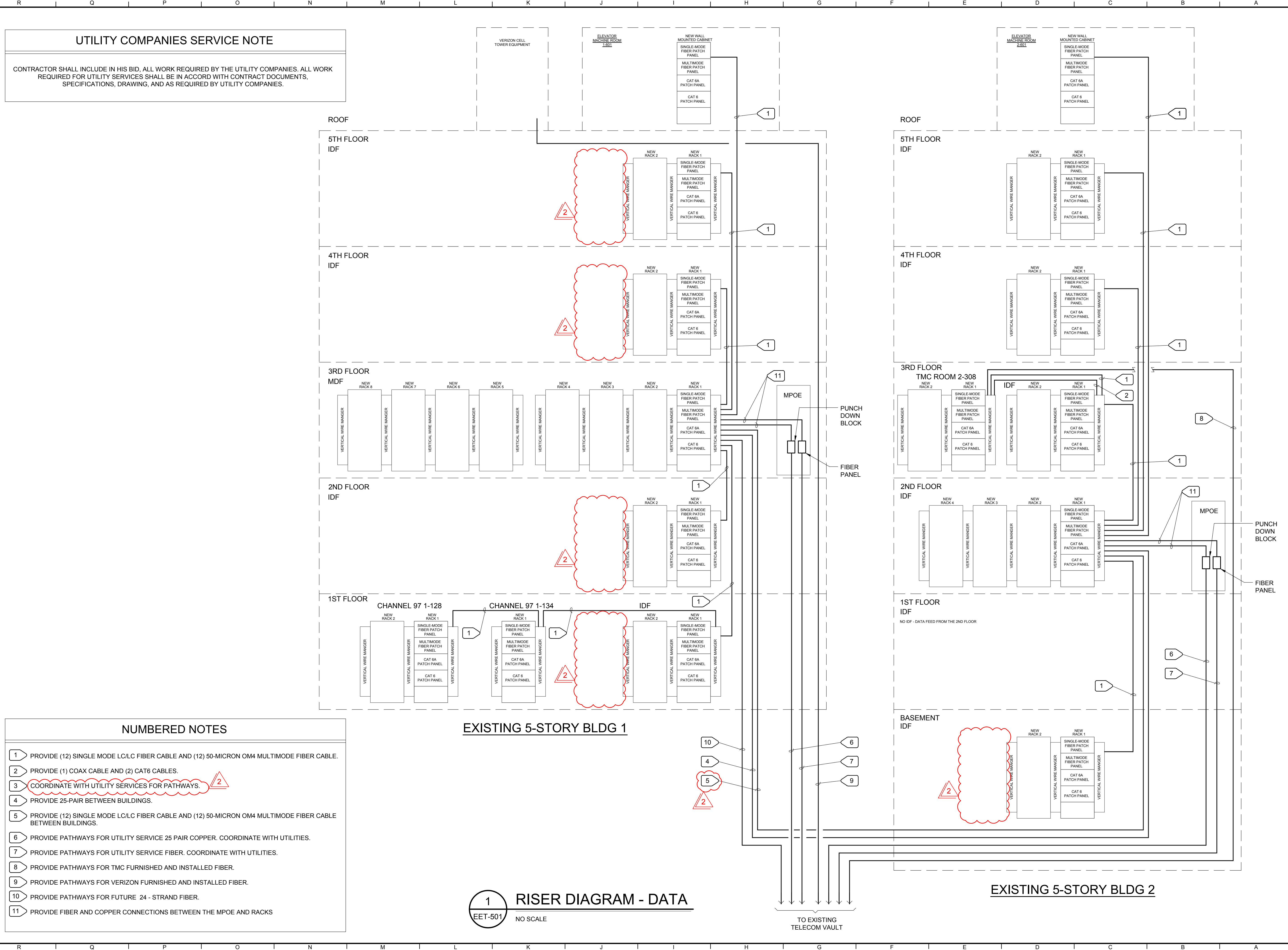
Architect of Record	BP
Project Architect	
Drafted By	
Checked By	
File Date	Project Number
12/15/21	E016015

Sheet Title
ELECTRICAL SYMBOL LIST & ABBREVIATIONS

Sheet Number
E-001
 Sheet 329 of 476

5471C.328

UNAUTHORIZED CHANGES & USES: M. Neils Engineering, Inc. preparing these plans will not be responsible for, or liable for unauthorized changes to or uses to these plans. All changes to these plans must be in writing and must be approved by M. Neils Engineering, Inc.



UTILITY COMPANIES SERVICE NOTE

CONTRACTOR SHALL INCLUDE IN HIS BID, ALL WORK REQUIRED BY THE UTILITY COMPANIES. ALL WORK REQUIRED FOR UTILITY SERVICES SHALL BE IN ACCORD WITH CONTRACT DOCUMENTS, SPECIFICATIONS, DRAWING, AND AS REQUIRED BY UTILITY COMPANIES.

- NUMBERED NOTES**
- 1 PROVIDE (12) SINGLE MODE LC/LC FIBER CABLE AND (12) 50-MICRON OM4 MULTIMODE FIBER CABLE.
 - 2 PROVIDE (1) COAX CABLE AND (2) CAT6 CABLES.
 - 3 COORDINATE WITH UTILITY SERVICES FOR PATHWAYS.
 - 4 PROVIDE 25-PAIR BETWEEN BUILDINGS.
 - 5 PROVIDE (12) SINGLE MODE LC/LC FIBER CABLE AND (12) 50-MICRON OM4 MULTIMODE FIBER CABLE BETWEEN BUILDINGS.
 - 6 PROVIDE PATHWAYS FOR UTILITY SERVICE 25 PAIR COPPER. COORDINATE WITH UTILITIES.
 - 7 PROVIDE PATHWAYS FOR UTILITY SERVICE FIBER. COORDINATE WITH UTILITIES.
 - 8 PROVIDE PATHWAYS FOR TMC FURNISHED AND INSTALLED FIBER.
 - 9 PROVIDE PATHWAYS FOR VERIZON FURNISHED AND INSTALLED FIBER.
 - 10 PROVIDE PATHWAYS FOR FUTURE 24 - STRAND FIBER.
 - 11 PROVIDE FIBER AND COPPER CONNECTIONS BETWEEN THE MPOE AND RACKS

EXISTING 5-STORY BLDG 1

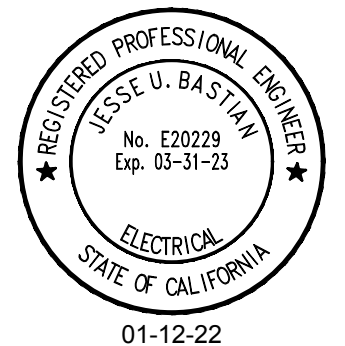
EXISTING 5-STORY BLDG 2

1 RISER DIAGRAM - DATA
EET-501 NO SCALE

TO EXISTING TELECOM VAULT



Consultant
M. NEILS ENGINEERING, INC.
Electrical Engineers | Lighting Designers
100 Howe Ave., Suite 235N
Sacramento, CA 95825-9217
www.mneilsengineering.com
Tel: (916) 923-4400 Fax: (916) 923-4410
PROJECT # 18337.21



Agency Approvals

City Approvals
Public Works Department
Approved by _____
Date _____
City Engineer, Stockton, CA

Issue: 100% CONSTRUCTION DOCUMENTS

No.	Date	Description
1	01-17-22	LOC No. 2

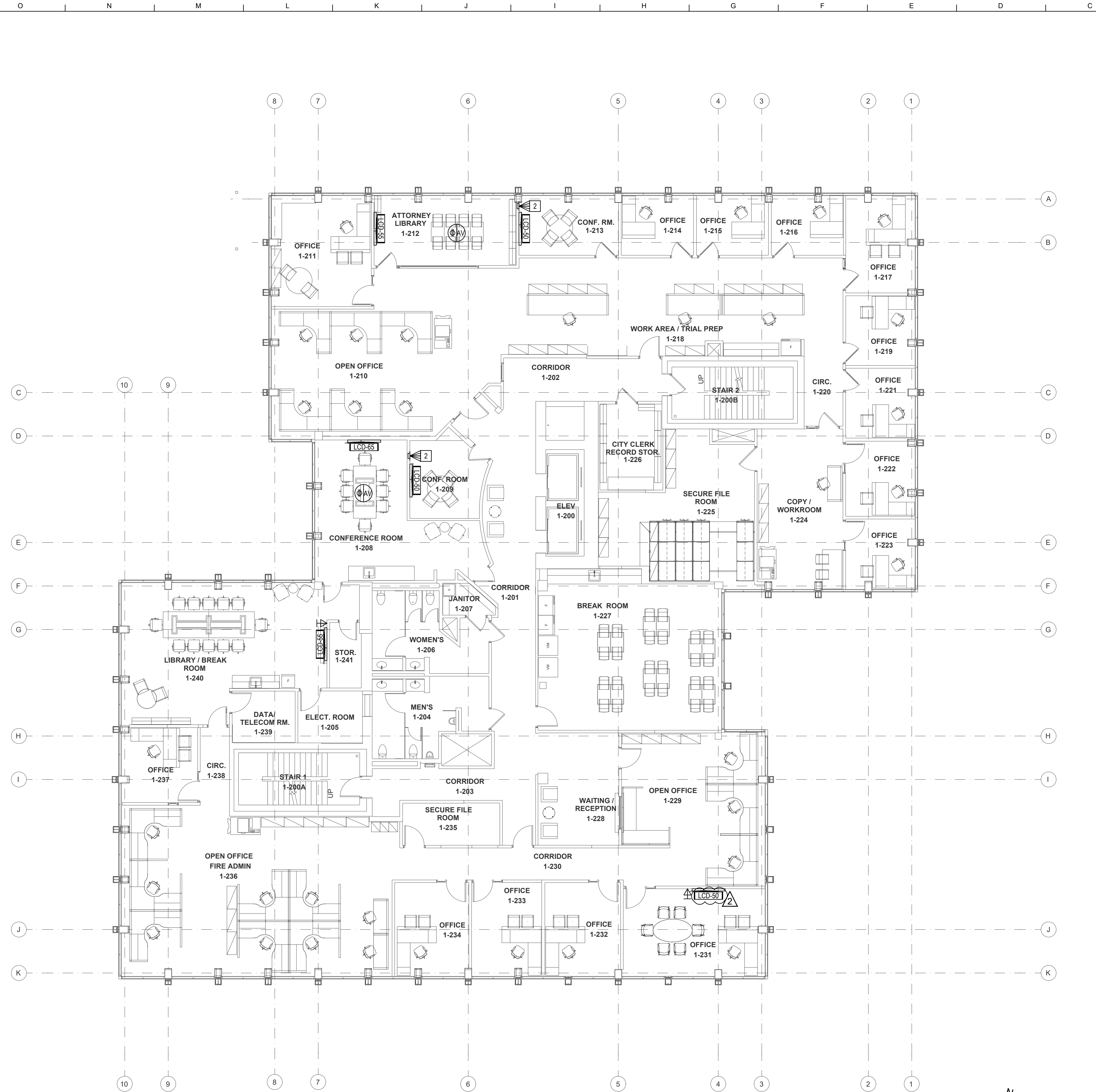
Project
NEW CITY HALL RENOVATIONS & RELOCATION PROJECT
501 & 509 West Weber Ave.
Stockton, CA 95203

Architect of Record	BP
Project Architect	
Drafted By	
Checked By	
File Date	Project Number
12/15/21	E016015

Sheet Title
RISER DIAGRAM - DATA

Sheet Number
EET-501

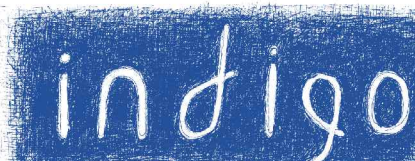
CAD FILE: BIMcloud BIM24 - BIMcloud Basic for ARCHICAD 24/City of Stockton/SCH PH2 90% 2021-04-09_4/13/2021_9:00 AM



A AUDIO VISUAL SECOND FLOOR PLAN - BUILDING 1
SCALE: 1/8" = 1'-0"

GENERAL NOTES

1. DEMO ALL EXISTING AUDIOVISUAL EQUIPMENT AND RECYCLE PER CALIFORNIA REQUIREMENTS.
2. IN ROOMS WITH INSTALLED SPEAKERS, ASSISTIVE LISTENING SHALL BE PROVIDED WITH A FACILITY AVAILABLE PORTABLE SYSTEM AND A CONNECTION POINT EITHER ON THE WALL OR AT THE TABLE.

Architect

HAMMOND+PLAYLE
 ARCHITECTS, LLP
 art, architecture + ecology
 909 FIFTH STREET, DAVIS, CA
 530.750.0756 WWW.INDIGOARCH.COM

Consultant

 180 Grand Ave.
 Suite 950
 Oakland, CA 94612
 510.258.8373
 www.guidepostsolutions.com



Agency Approvals

City Approvals
Public Works Department
 Approved by _____
 Date _____
 City Engineer, Stockton, CA _____

Issue:

No.	Date	Description
1	01/06/22	LOC NO. 1
2	01/19/22	ADDENDUM 2

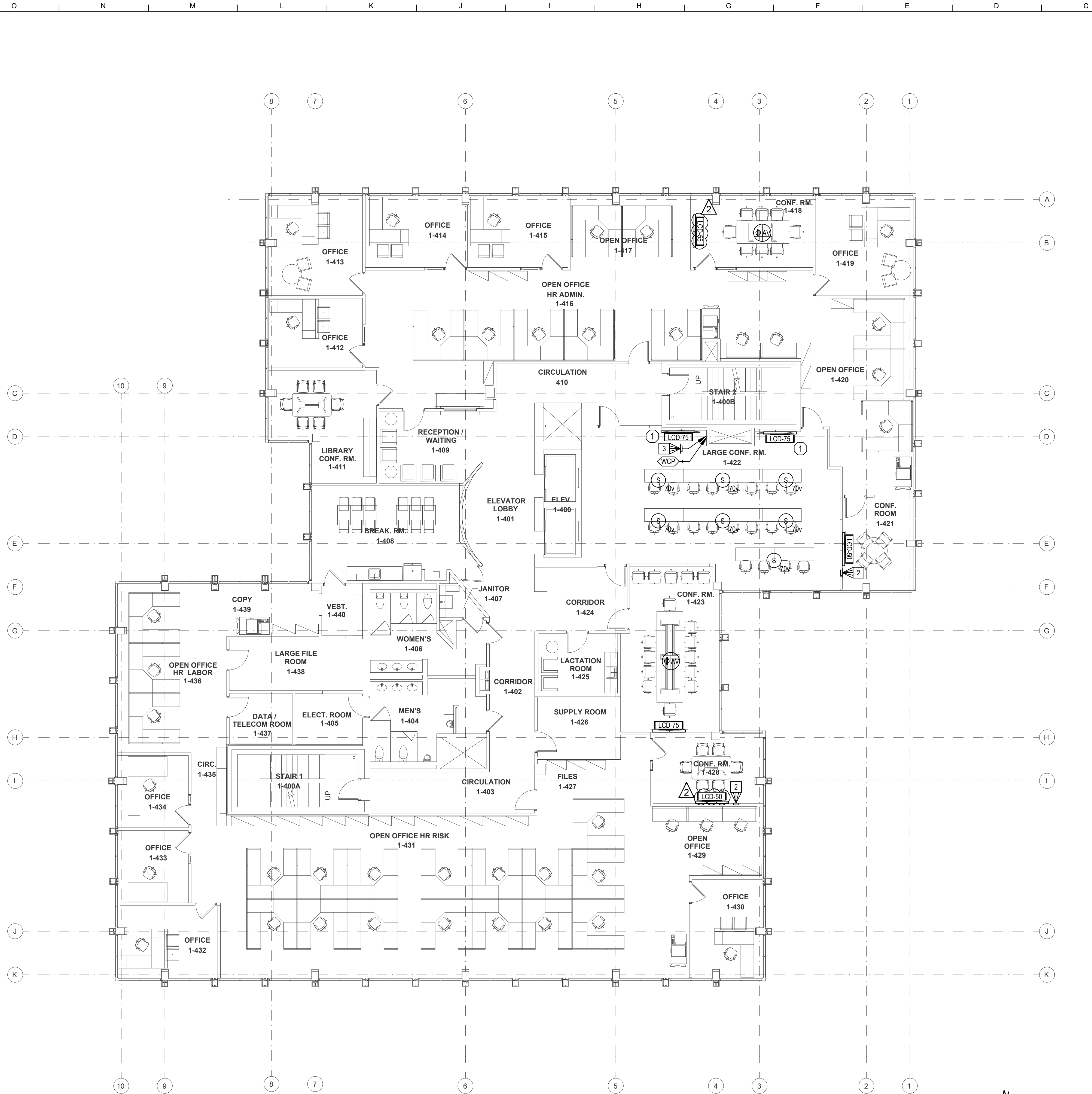
Project
NEW CITY HALL RENOVATIONS & RELOCATION PROJECT
 501 & 509 West Weber Ave.
 Stockton, CA 95203

Architect of Record	BP
Project Architect	
Drafted By	AG
Checked By	CM
File Date	Project Number
12/15/2021	E016015

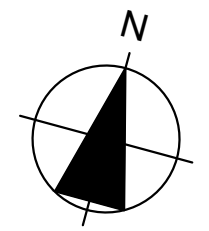
Sheet Title
AUDIO VISUAL SECOND FLOOR PLAN - BUILDING 1

Sheet Number
AV1-102

CAD FILE: BIMcloud BIM24 - BIMcloud Basic for ARCHICAD 24/City of Stockton/SCH PH2 90% 2021-04-09_4/13/2021_9:00 AM



A AUDIO VISUAL FOURTH FLOOR PLAN - BUILDING 1
Scale: 1/8" = 1'-0"



GENERAL NOTES

1. DEMO ALL EXISTING AUDIOVISUAL EQUIPMENT AND RECYCLE PER CALIFORNIA REQUIREMENTS.
2. IN ROOMS WITH INSTALLED SPEAKERS, ASSISTIVE LISTENING SHALL BE PROVIDED WITH A FACILITY AVAILABLE PORTABLE SYSTEM AND A CONNECTION POINT EITHER ON THE WALL OR AT THE TABLE.

KEYNOTES

1. LCD DISPLAY SURFACE MOUNTED ON ARTICULATING ARM MOUNT.

Architect

indigo
HAMMOND+PLAYLE
ARCHITECTS, LLP
art, architecture + ecology
909 FIFTH STREET, DAVIS, CA
530.750.0756 WWW.INDIGOARCH.COM

Consultant

Guidepost
180 Grand Ave.
Suite 950
Oakland, CA 94612
510.258.8373
www.guidepostsolutions.com

Agency Approvals

City Approvals

Public Works Department

Approved by _____
Date _____

City Engineer, Stockton, CA _____

Issue:

No.	Date	Description
1	01/06/22	LOC NO. 1
2	01/19/22	ADDENDUM 2

Project

**NEW CITY HALL
RENOVATIONS &
RELOCATION
PROJECT**
501 & 509 West Weber Ave.
Stockton, CA 95203

Architect of Record	BP
Project Architect	
Drafted By	AG
Checked By	CM
File Date	Project Number
12/15/2021	E016015

Sheet Title

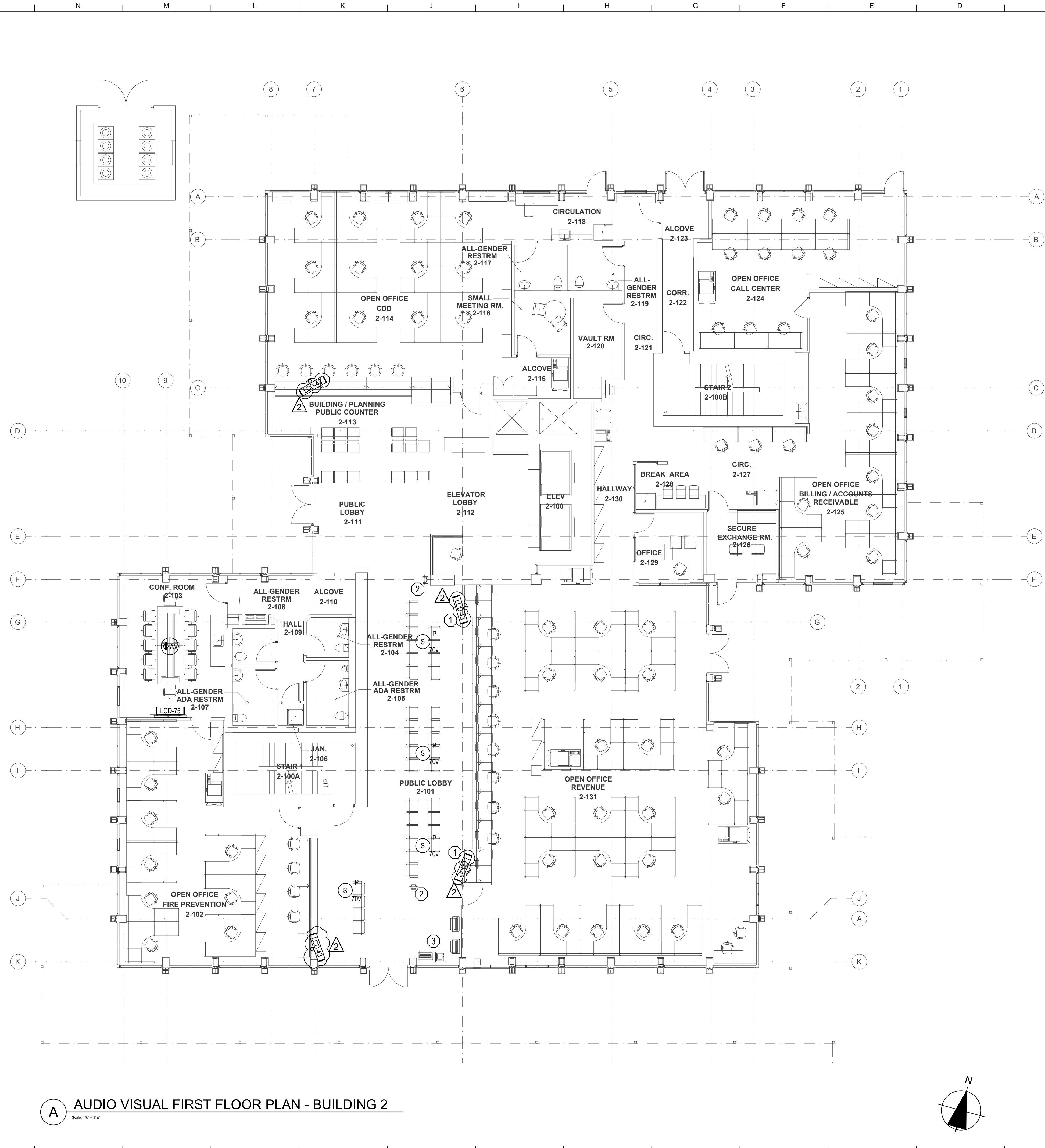
**AUDIO VISUAL FOURTH
FLOOR - BUILDING 1**

Sheet Number

AV1-104

Sheet 458 of 476

CAD FILE: BIMcloud BIM24 - BIMcloud Basic for ARCHICAD 24/City of Stockton/SCH PH2 90% 2021-04-09, 4/13/2021, 9:00 AM



A AUDIO VISUAL FIRST FLOOR PLAN - BUILDING 2
SCALE: 1/8" = 1'-0"

GENERAL NOTES

1. DEMO ALL EXISTING AUDIOVISUAL EQUIPMENT AND RECYCLE PER CALIFORNIA REQUIREMENTS.
2. IN ROOMS WITH INSTALLED SPEAKERS, ASSISTIVE LISTENING SHALL BE PROVIDED WITH A FACILITY AVAILABLE PORTABLE SYSTEM AND A CONNECTION POINT EITHER ON THE WALL OR AT THE TABLE.

KEYNOTES

1. DISPLAYS FOR QUEUING SYSTEM. POLE MOUNTED.
2. QUEUING STATION. EXISTING. CONNECT TO NEW DISPLAYS.
3. QUEUING SYSTEM. EXISTING. CONNECT TO NEW SPEAKERS.

Architect

HAMMOND+PLAYLE
 ARCHITECTS, LLP
 art, architecture + ecology
 909 FIFTH STREET, DAVIS, CA
 530.750.0756 WWW.INDIGOARCH.COM

Consultant

 180 Grand Ave.
 Suite 950
 Oakland, CA 94612
 510.268.8373
 www.guidepostsolutions.com



Agency Approvals

City Approvals
Public Works Department
 Approved by _____
 Date _____
 City Engineer, Stockton, CA

Issue:

No.	Date	Description
1	01/06/22	LOC NO. 1
2	01/19/22	ADDENDUM 2

Project

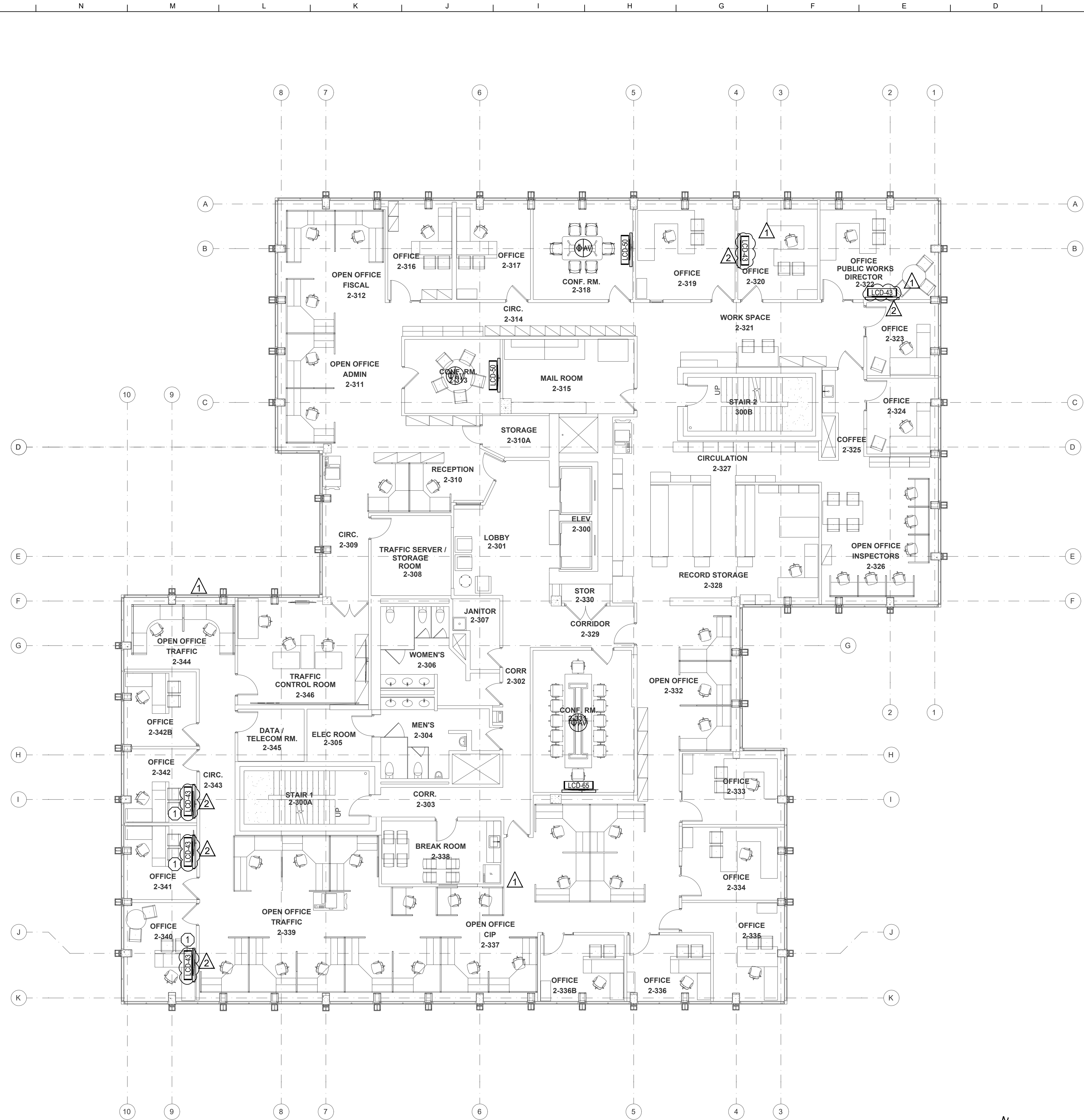
NEW CITY HALL RENOVATIONS & RELOCATION PROJECT
 501 & 509 West Weber Ave.
 Stockton, CA 95203

Architect of Record	BP
Project Architect	
Drafted By	AG
Checked By	CM
File Date	Project Number
12/15/2021	E016015

Sheet Title
AUDIO VISUAL FIRST FLOOR PLAN - BUILDING 2

Sheet Number
AV2-101
 Sheet 461 of 476
5471C.460

CAD FILE: BIMcloud BIM24 - BIMcloud Basic for ARCHICAD 24/City of Stockton/SCM PH2 90% 2021-04-09_4/13/2021_9:00 AM



A AUDIO VISUAL THIRD FLOOR PLAN - BUILDING 2
SCALE: 1/8" = 1'-0"

GENERAL NOTES

1. DEMO ALL EXISTING AUDIOVISUAL EQUIPMENT AND RECYCLE PER CALIFORNIA REQUIREMENTS.
2. IN ROOMS WITH INSTALLED SPEAKERS, ASSISTIVE LISTENING SHALL BE PROVIDED WITH A FACILITY AVAILABLE PORTABLE SYSTEM AND A CONNECTION POINT EITHER ON THE WALL OR AT THE TABLE.

KEYNOTES

1. WALL MOUNTED LCD DISPLAY WITH HDBASET RECEIVER. (1) CAT6 CABLE TO 2-346.

Architect

HAMMOND+PLAYLE
 ARCHITECTS, LLP
 art, architecture + ecology
 909 FIFTH STREET, DAVIS, CA
 530.750.0756 WWW.INDIGOARCH.COM

Consultant

 180 Grand Ave.
 Suite 950
 Oakland, CA 94612
 510.258.8373
 www.guidepostsolutions.com



Agency Approvals

City Approvals
Public Works Department
 Approved by _____
 Date _____
 City Engineer, Stockton, CA

Issue:

No.	Date	Description
1	01/06/22	LOC NO. 1
2	01/19/22	ADDENDUM 2

Project

NEW CITY HALL RENOVATIONS & RELOCATION PROJECT
 501 & 509 West Weber Ave.
 Stockton, CA 95203

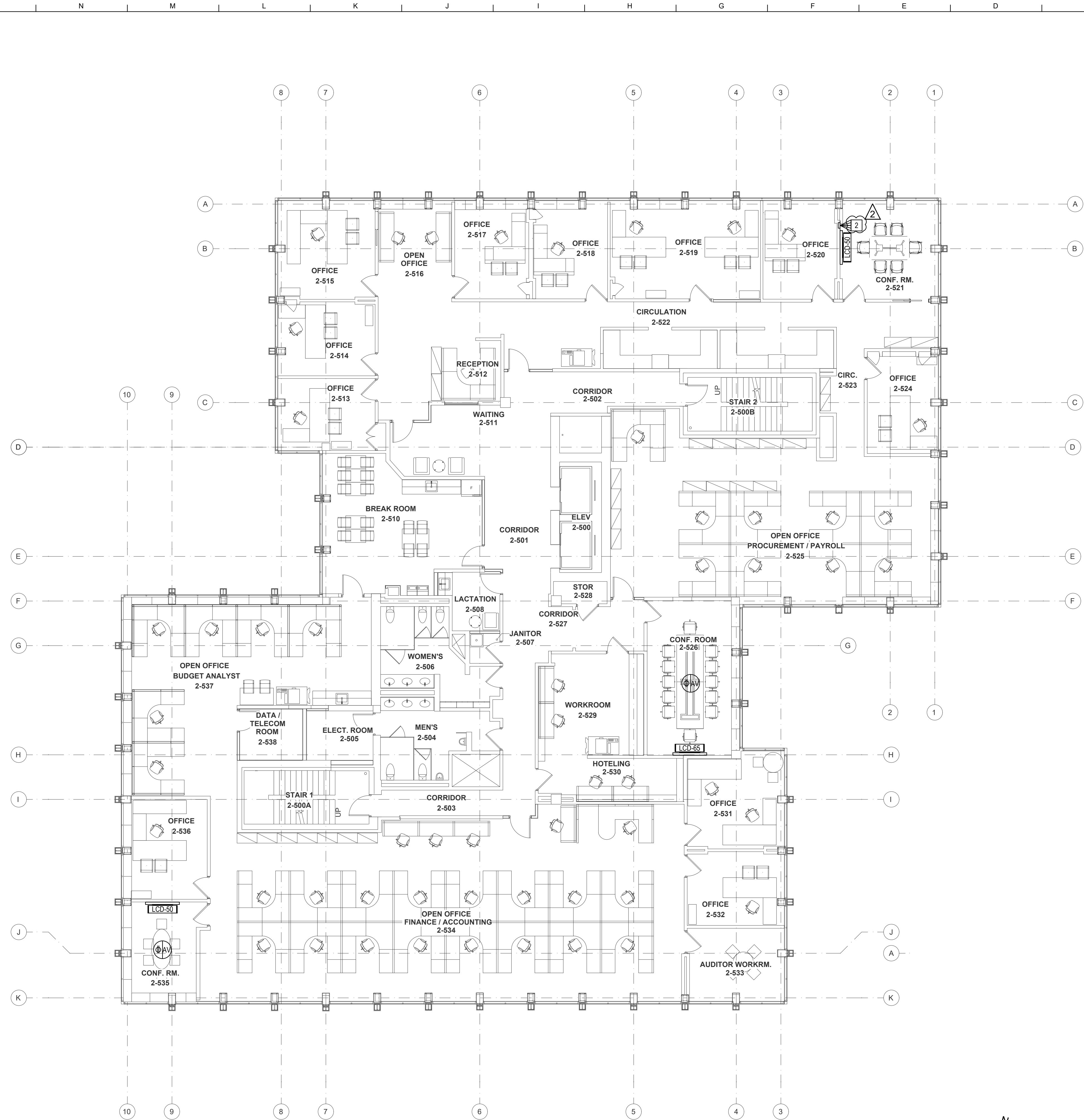
Architect of Record	BP
Project Architect	
Drafted By	AG
Checked By	CM
File Date	Project Number
12/15/2021	E016015

Sheet Title
AUDIO VISUAL THIRD FLOOR PLAN - BUILDING 2

Sheet Number
AV2-103
 Sheet 463 of 476

5471C.462

CAD FILE: BIMcloud BIM24 - BIMcloud Basic for ARCHICAD 24/City of Stockton/SCH PH2 90% 2021-04-09_4/13/2021_9:00 AM



A AUDIO VISUAL FIFTH FLOOR PLAN - BUILDING 2
SCALE: 1/8" = 1'-0"

GENERAL NOTES

1. DEMO ALL EXISTING AUDIOVISUAL EQUIPMENT AND RECYCLE PER CALIFORNIA REQUIREMENTS.
2. IN ROOMS WITH INSTALLED SPEAKERS, ASSISTIVE LISTENING SHALL BE PROVIDED WITH A FACILITY AVAILABLE PORTABLE SYSTEM AND A CONNECTION POINT EITHER ON THE WALL OR AT THE TABLE.

Architect

HAMMOND+PLAYLE
 ARCHITECTS, LLP
 art, architecture + ecology
 909 FIFTH STREET, DAVIS, CA
 530.750.0756 WWW.INDIGOARCH.COM

Consultant

 180 Grand Ave.
 Suite 950
 Oakland, CA 94612
 510.258.8373
 www.guidepostsolutions.com



Agency Approvals

City Approvals
Public Works Department
 Approved by _____
 Date _____
 City Engineer, Stockton, CA _____

Issue:

No.	Date	Description
1	01/06/22	LOC NO. 1
2	01/19/22	ADDENDUM 2

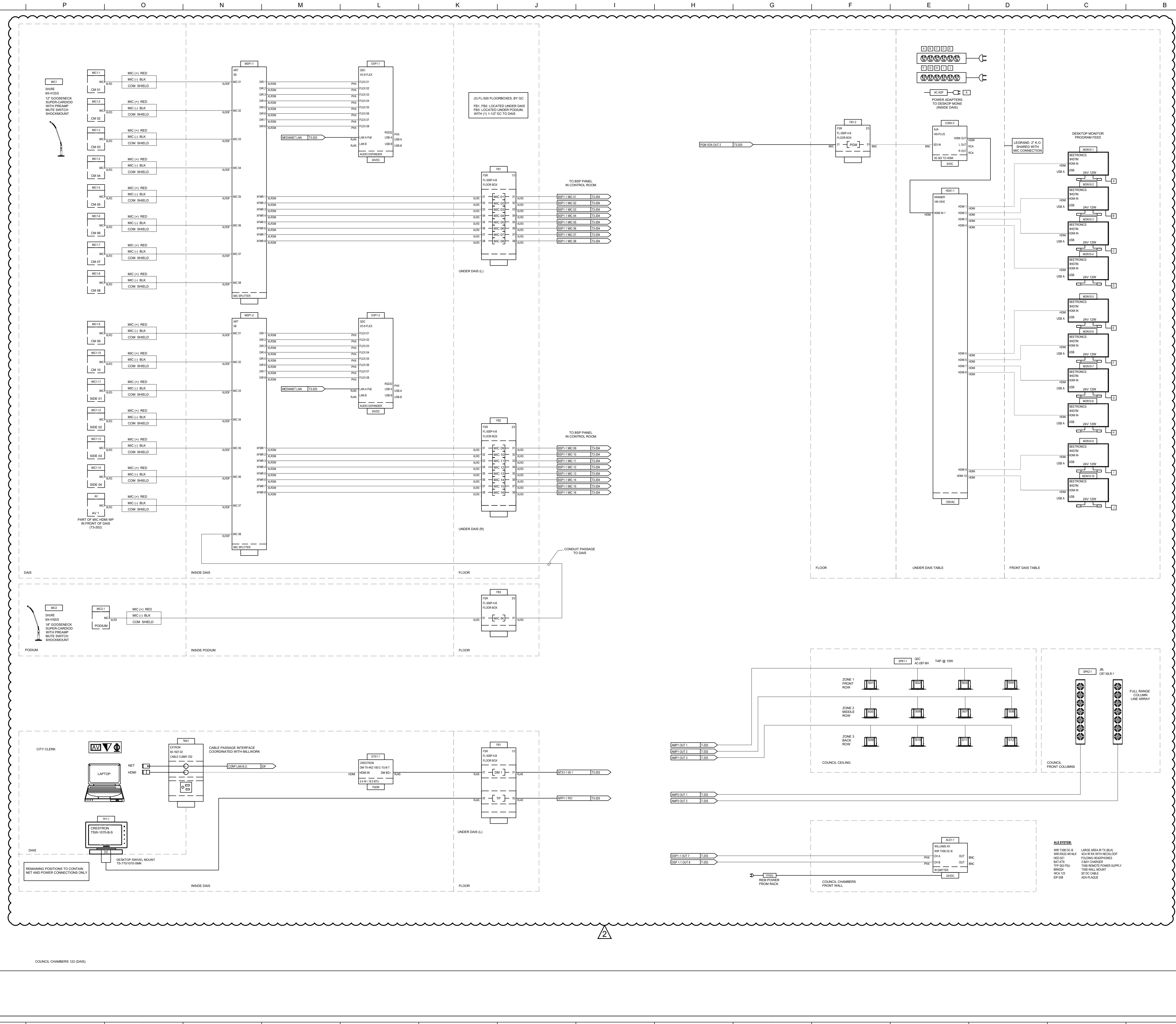
Project
NEW CITY HALL RENOVATIONS & RELOCATION PROJECT
 501 & 509 West Weber Ave.
 Stockton, CA 95203

Architect of Record	BP
Project Architect	
Drafted By	AG
Checked By	CM
File Date	Project Number
12/15/2021	E016015

Sheet Title
AUDIO VISUAL FIFTH FLOOR PLAN - BUILDING 2

Sheet Number
AV2-105

CAD FILE: BIM24 - BIM24.dwg - Basic for ARCHICAD 24/City of Stockton/SCH PH2 90% 2021-04-09 4/13/2021 9:00 AM



Consultant
Guidepost
 180 Grand Ave.
 Suite 950
 Oakland, CA 94612
 510.266.8373
 www.guidepostsolutions.com



Agency Approvals

City Approvals

Public Works Department

Approved by _____
 Date _____

City Engineer, Stockton, CA

Issue:

No.	Date	Description
1	01/06/22	LOC NO. 1
2	01/19/22	ADDENDUM 2

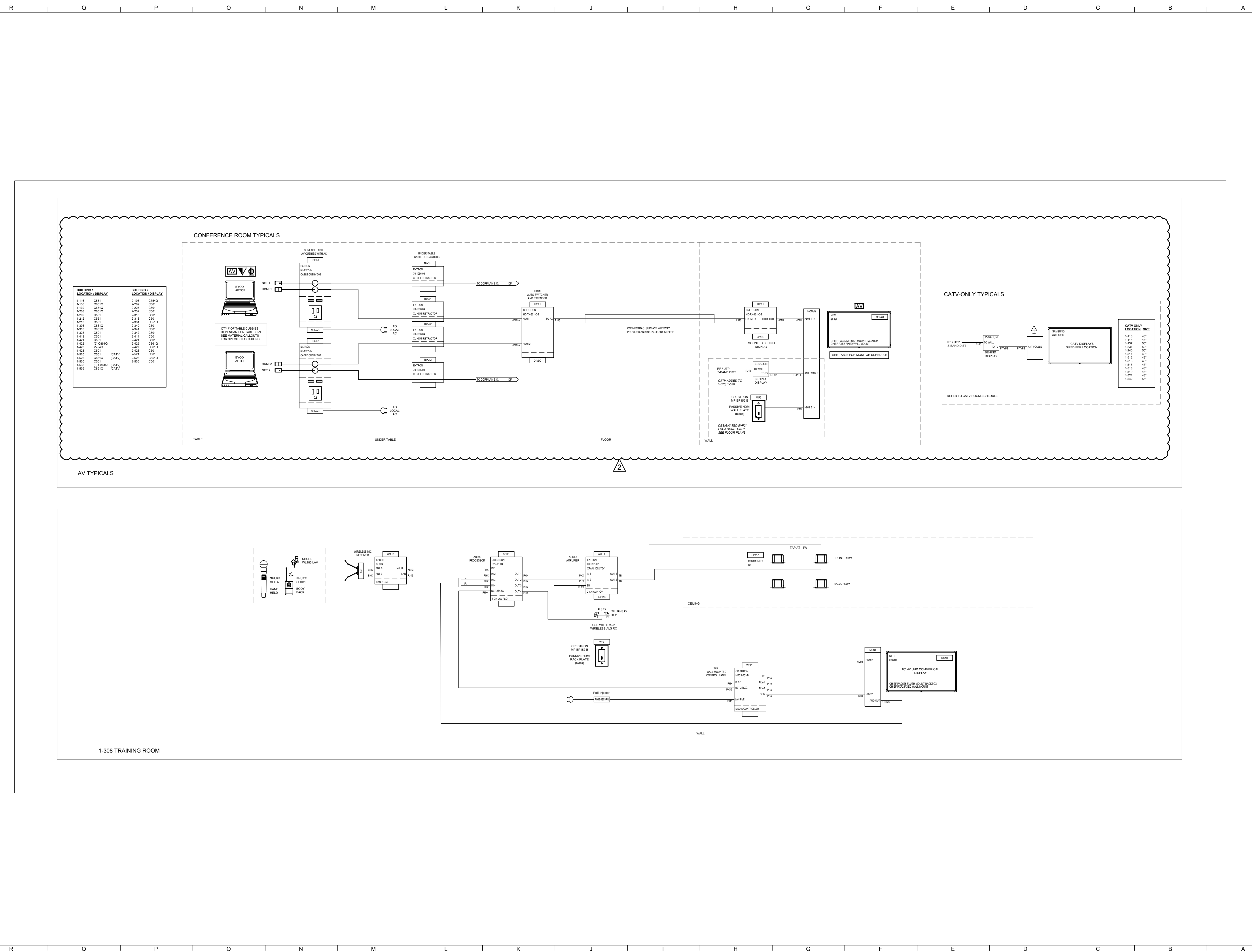
NEW CITY HALL RENOVATIONS & RELOCATION PROJECT
 501 & 509 West Weber Ave.
 Stockton, CA 95203

Architect of Record: BP
 Project Architect: AG
 Checked By: CM
 File Date: 12/15/2021
 Project Number: E016015

Sheet Title: **AUDIO VISUAL SINGLE LINES**

Sheet Number: **AV-301**
 Sheet 466 of 476
5471C.465

CAD FILE: BIM24 - BIM24out Basic for ARCHICAD 24/City of Stockton/SCH PH12 90% 2021-04-09_4/13/2021, 9:00 AM



Agency Approvals

City Approvals
Public Works Department
 Approved by _____
 Date _____

City Engineer, Stockton, CA

Issue:

No.	Date	Description
1	01/06/22	LOC NO. 1
2	01/19/22	ADDENDUM 2

Project
NEW CITY HALL RENOVATIONS & RELOCATION PROJECT
 501 & 509 West Weber Ave.
 Stockton, CA 95203

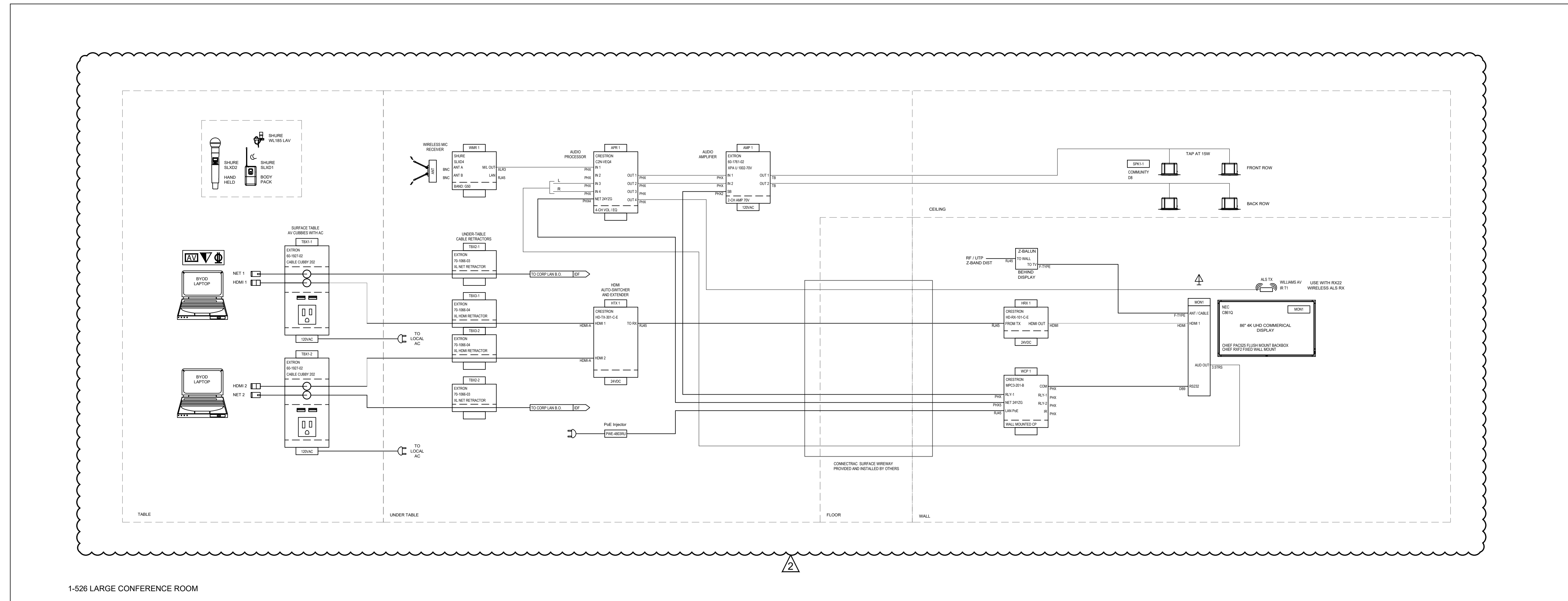
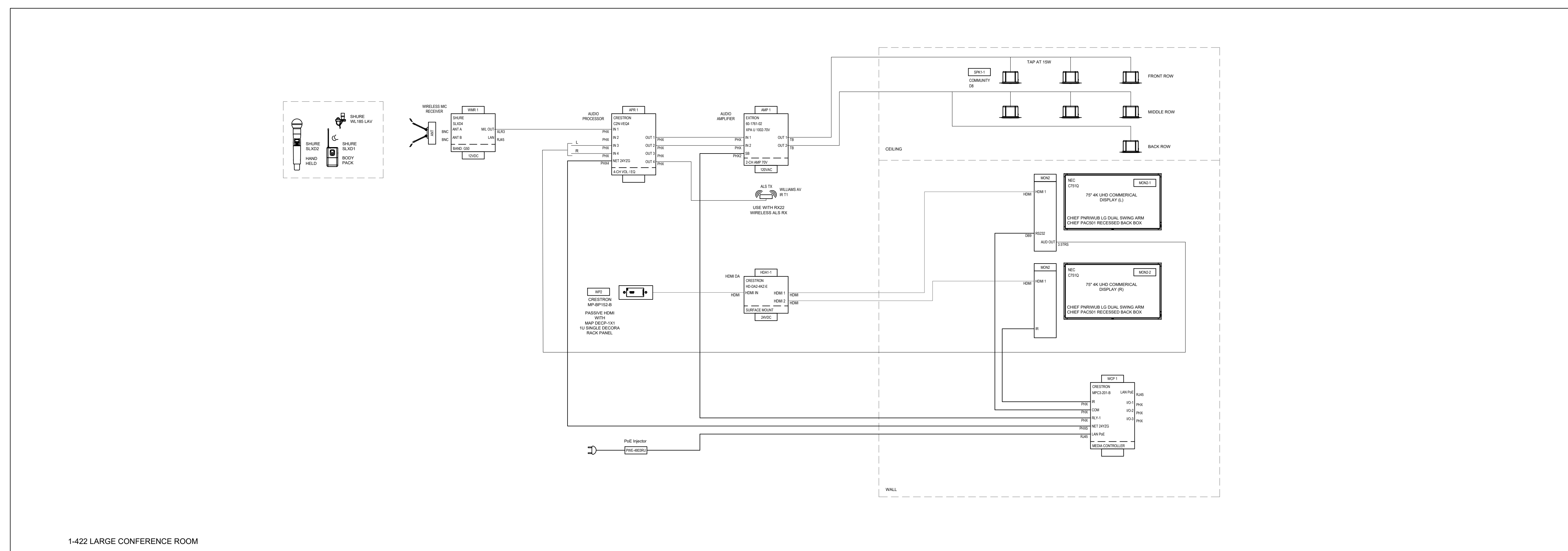
Architect of Record: BP
 Project Architect: ACO
 Drafted By: ACO
 Checked By: CM
 File Date: 12/15/2021
 Project Number: E016015

Sheet Title
AUDIO VISUAL SINGLE LINES

Sheet Number
AV-304
 Sheet 469 of 476
5471C.468

CAD FILE: BIM24 - BIM24out Basic for ARCHICAD 24/City of Stockton/SCH PH2 50% 2021-04-09_4/13/2021, 9:00 AM

R Q P O N M L K J I H G F E D C B A



Architect
indigo
HAMMOND+PLAYLE
 ARCHITECTS, LLP
 art, architecture + ecology
 909 FIFTH STREET, DAVIS, CA
 930.750.0756 WWW.INDIGOARCH.COM

Consultant
Guidepost
 180 Grand Ave.
 Suite 950
 Oakland, CA 94612
 510.268.8373
 www.guidepostsolutions.com



Agency Approvals

City Approvals

Public Works Department
 Approved by _____
 Date _____

City Engineer, Stockton, CA

Issue:

No.	Date	Description
1	01/06/22	LOC NO. 1
2	01/19/22	ADDENDUM 2

Project

NEW CITY HALL RENOVATIONS & RELOCATION PROJECT
 501 & 509 West Weber Ave.
 Stockton, CA 95203

Architect of Record: BP
 Project Architect: AO
 Checked By: CM

File Date: 12/15/2021
 Project Number: E016015

Sheet Title
AUDIO VISUAL SINGLE LINES

Sheet Number
AV-305
 Sheet 470 of 476
5471C.469

R Q P O N M L K J I H G F E D C B A

